

# SITE PLAN



## VALLEY WING

- |                    |                    |                    |                   |
|--------------------|--------------------|--------------------|-------------------|
| 1 Grand Entrance   | 6 Green Terrace    | 10 Infinity Pool   | 15 Serenity Walk  |
| 2 Smart Storage    | 7 Lantern Valley   | 11 Bubbling Waters | 16 Verdant Garden |
| 3 Valley Boulevard | <b>VALLEY CLUB</b> |                    |                   |
| 4 Water Terrace    | 8 Valley Pavilion  | 12 Spa Beds        |                   |
| 5 Lantern Arrival  | 9 Verandah         | 13 Valley Deck     |                   |
|                    |                    | 14 Sun Lawn        |                   |

## RAINFOREST WING

- |                |                     |                        |                     |                  |
|----------------|---------------------|------------------------|---------------------|------------------|
| 17 Water Bay   | 22 Rainforest Deck  | <b>RAINFOREST CLUB</b> |                     | 32 Heritage Lawn |
| 18 Hammock Bay | 23 50m Leisure Pool | 28 Rainforest Pavilion | 33 Hanging Garden   |                  |
| 19 Jacuzzi     | 24 Tree Isle        | 29 Gymnasium           | 34 Heliconia Garden |                  |
| 20 Foot Spa    | 25 River Walk       | 30 Steam Rooms         |                     |                  |
| 21 Aqua Gym    | 26 Cascading Water  | 31 Forest Bridge       |                     |                  |
|                | 27 Splash Pool      |                        |                     |                  |

## OTHERS

- BC Bin Centre
- SS Substation
- GH Guard House
- Water Tank
- Linkway

## 16 FACILITIES AT TREETOP WALK

- |                   |                       |                       |              |
|-------------------|-----------------------|-----------------------|--------------|
| • Fitness Station | • Tennis Court        | • Gourmet Pavilion    | • Canopy Bar |
| • Meditation Lawn | • Chess Garden        | • Alfresco Pavilion   | • Cabana     |
| • Yoga Deck       | • Star Gazing Garden  | • Teppanyaki Pavilion | • Cabana Bar |
| • Games Station   | • Spice & Herb Garden | • Canopy              | • Outpost    |

1 - 5 BASEMENT LEVEL      6 - 34 LANDSCAPE DECK

0      20      40 METERS

# 1 - BEDROOM

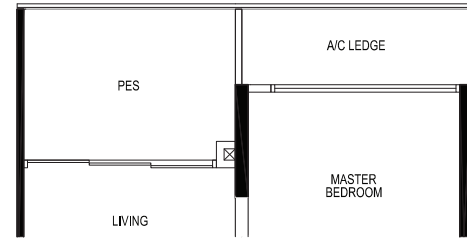
## TYPE A1a-p

50 sq m / 538 sq ft  
 INCLUSIVE OF 6 SQ M PES & 3 SQ M A/C LEDGE

CEILING HEIGHT AT LIVING / DINING,  
 AND BEDROOM IS APPROXIMATELY 4.3 M

TOWER 11M

UNIT  
 #01-64



# 1 - BEDROOM

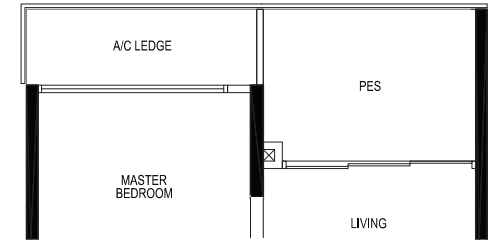
## TYPE A1b-P

51 sq m / 549 sq ft  
 INCLUSIVE OF 6 SQ M PES & 3 SQ M A/C LEDGE

CEILING HEIGHT AT LIVING / DINING,  
 AND BEDROOM IS APPROXIMATELY 4.3 M

TOWER 11M

UNIT  
 #01-65



# 1 - BEDROOM

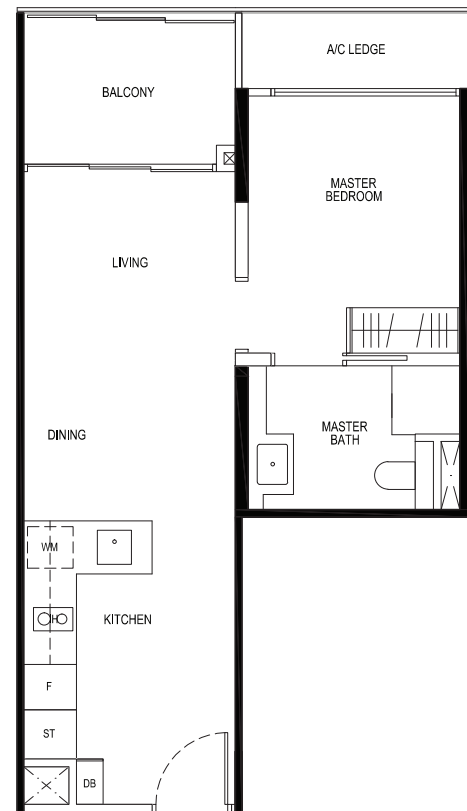
## TYPE A1a

50 sq m / 538 sq ft  
 INCLUSIVE OF 6 SQ M BALCONY & 3 SQ M A/C LEDGE

5TH STOREY ONLY: CEILING HEIGHT AT LIVING / DINING,  
 AND BEDROOM IS APPROXIMATELY 4.3 M

TOWER 11M

UNIT  
 #02-64 TO #05-64



# 1 - BEDROOM

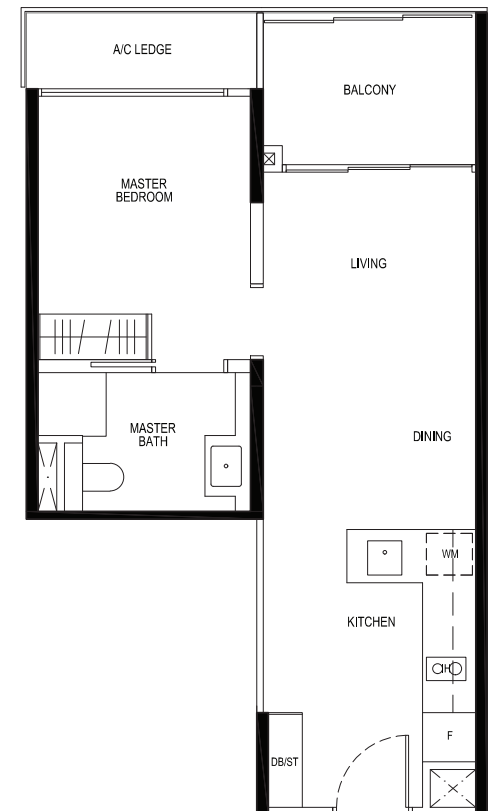
## TYPE A1b

51 sq m / 549 sq ft  
 INCLUSIVE OF 6 SQ M BALCONY & 3 SQ M A/C LEDGE

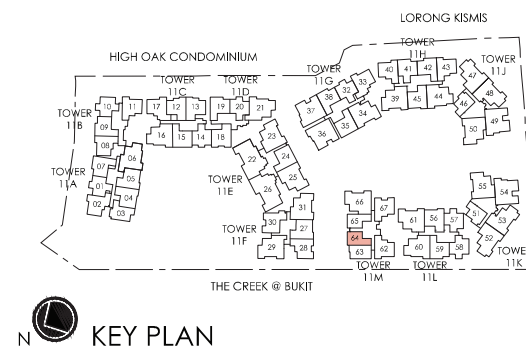
5TH STOREY ONLY: CEILING HEIGHT AT LIVING / DINING,  
 AND BEDROOM IS APPROXIMATELY 4.3 M

TOWER 11M

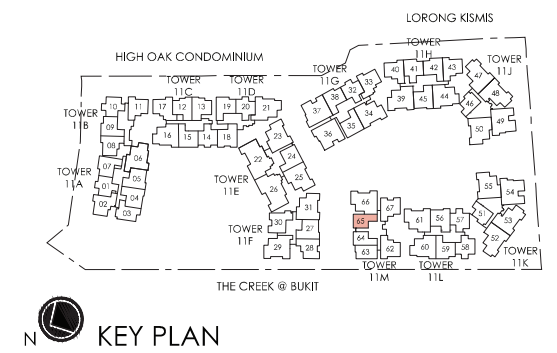
UNIT  
 #02-65 TO #05-65



- LEGEND:
- F - FRIDGE
  - WM - WASHER CUM DRYER
  - IH - INDUCTION HOB
  - GH - GAS HOB
  - ST - STORAGE
  - DB - DISTRIBUTION BOARD
  - WC - WATER CLOSET
  - A/C - AIR CONDITIONER
  - PES - PRIVATE ENCLOSED SPACE



- LEGEND:
- F - FRIDGE
  - WM - WASHER CUM DRYER
  - IH - INDUCTION HOB
  - GH - GAS HOB
  - ST - STORAGE
  - DB - DISTRIBUTION BOARD
  - WC - WATER CLOSET
  - A/C - AIR CONDITIONER
  - PES - PRIVATE ENCLOSED SPACE



AREA INCLUDES A/C LEDGE, BALCONY, PES AND VOID AREA WHERE APPLICABLE. SOME UNITS ARE MIRROR IMAGES OF THE APARTMENT PLANS SHOWN IN THE BROCHURE. PLEASE REFER TO KEY PLANS FOR ORIENTATION. ALL PLANS ARE SUBJECT TO CHANGE AS MAY BE APPROVED BY THE RELEVANT AUTHORITIES. ALL FLOOR AREAS ARE APPROXIMATE MEASUREMENTS ONLY AND ARE SUBJECT TO FINAL SURVEY. BP APPROVAL NO. A1839-00012-2017-BP01 DATED 14/06/2018

AREA INCLUDES A/C LEDGE, BALCONY, PES AND VOID AREA WHERE APPLICABLE. SOME UNITS ARE MIRROR IMAGES OF THE APARTMENT PLANS SHOWN IN THE BROCHURE. PLEASE REFER TO KEY PLANS FOR ORIENTATION. ALL PLANS ARE SUBJECT TO CHANGE AS MAY BE APPROVED BY THE RELEVANT AUTHORITIES. ALL FLOOR AREAS ARE APPROXIMATE MEASUREMENTS ONLY AND ARE SUBJECT TO FINAL SURVEY. BP APPROVAL NO. A1839-00012-2017-BP01 DATED 14/06/2018

# 1 - BEDROOM

## TYPE A1C-P

48 sq m / 517 sq ft  
 INCLUSIVE OF 6 SQ M PES & 3 SQ M A/C LEDGE

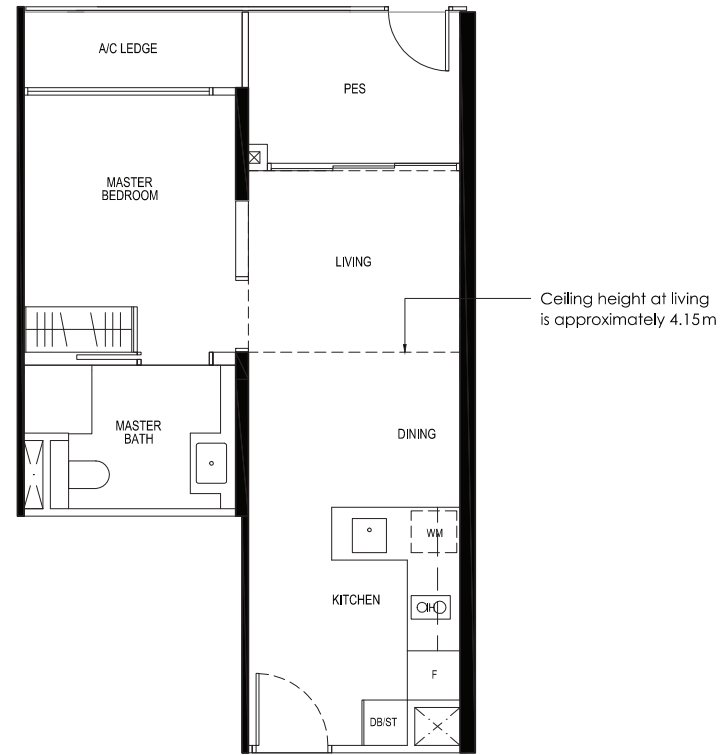
CEILING HEIGHT AT LIVING AND BEDROOM IS APPROXIMATELY 4.15 M

CEILING HEIGHT AT DINING IS APPROXIMATELY 3.20 M

TOWER 11H & 11L

UNIT  
 #01-45\*  
 #01-56

\* MIRROR IMAGE



# 1 - BEDROOM

## TYPE A2-P

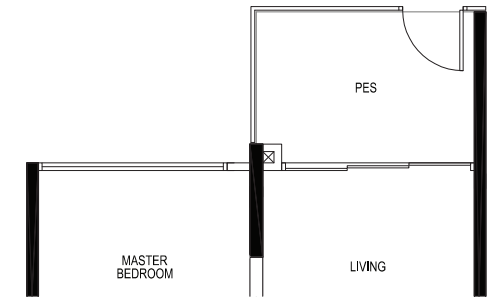
52 sq m / 560sq ft  
 INCLUSIVE OF 6 SQ M PES & 4 SQ M A/C LEDGE

CEILING HEIGHT AT LIVING / DINING, BEDROOM AND STUDY IS APPROXIMATELY 4.3 M

TOWER 11J & 11K

UNIT  
 #01-46\*  
 #01-51

\* MIRROR IMAGE



# 1 - BEDROOM

## TYPE A2

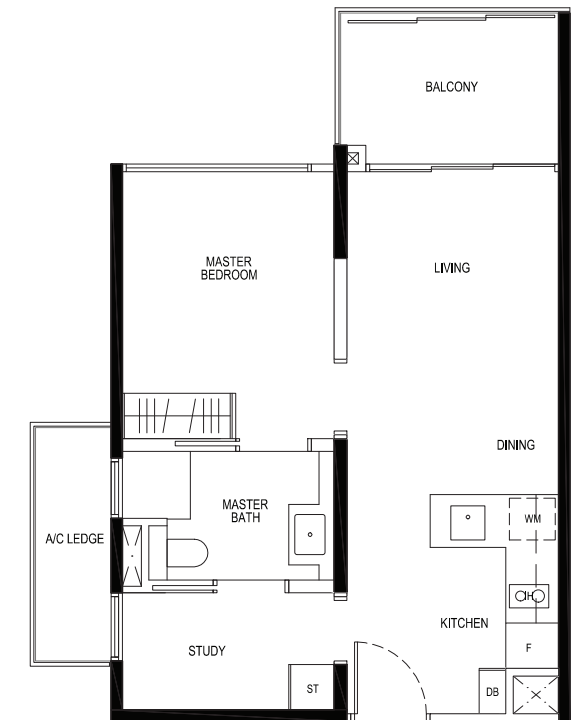
52 sq m / 560 sq ft  
 INCLUSIVE OF 6 SQ M BALCONY & 4 SQ M A/C LEDGE

5TH STOREY ONLY: CEILING HEIGHT AT LIVING / DINING, BEDROOM AND STUDY IS APPROXIMATELY 4.3 M

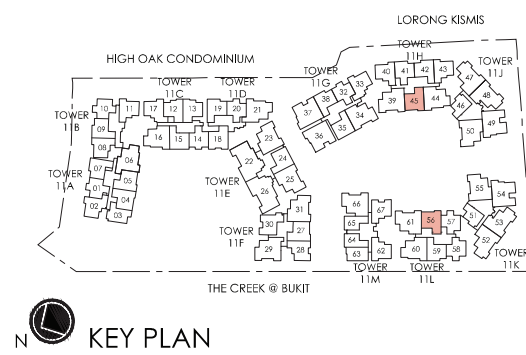
TOWER 11J & 11K

UNIT  
 #02-46 TO #05-46\*  
 #02-51 TO #05-51

\* MIRROR IMAGE



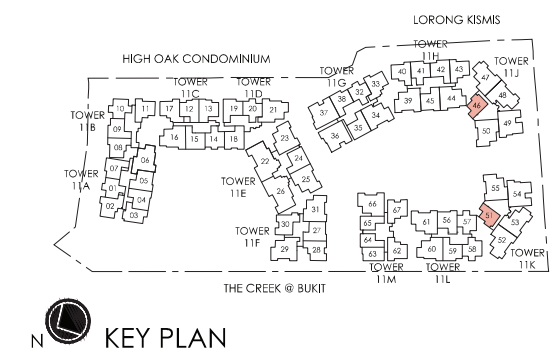
- LEGEND:
- |                       |                         |                              |
|-----------------------|-------------------------|------------------------------|
| F - FRIDGE            | GH - GAS HOB            | WC - WATER CLOSET            |
| WM - WASHER CUM DRYER | ST - STORAGE            | A/C - AIR CONDITIONER        |
| IH - INDUCTION HOB    | DB - DISTRIBUTION BOARD | PES - PRIVATE ENCLOSED SPACE |



AREA INCLUDES A/C LEDGE, BALCONY, PES AND VOID AREA WHERE APPLICABLE. SOME UNITS ARE MIRROR IMAGES OF THE APARTMENT PLANS SHOWN IN THE BROCHURE. PLEASE REFER TO KEY PLANS FOR ORIENTATION. ALL PLANS ARE SUBJECT TO CHANGE AS MAY BE APPROVED BY THE RELEVANT AUTHORITIES. ALL FLOOR AREAS ARE APPROXIMATE MEASUREMENTS ONLY AND ARE SUBJECT TO FINAL SURVEY. BP APPROVAL NO. A1839-00012-2017-BP01 DATED 14/06/2018



- LEGEND:
- |                       |                         |                              |
|-----------------------|-------------------------|------------------------------|
| F - FRIDGE            | GH - GAS HOB            | WC - WATER CLOSET            |
| WM - WASHER CUM DRYER | ST - STORAGE            | A/C - AIR CONDITIONER        |
| IH - INDUCTION HOB    | DB - DISTRIBUTION BOARD | PES - PRIVATE ENCLOSED SPACE |



AREA INCLUDES A/C LEDGE, BALCONY, PES AND VOID AREA WHERE APPLICABLE. SOME UNITS ARE MIRROR IMAGES OF THE APARTMENT PLANS SHOWN IN THE BROCHURE. PLEASE REFER TO KEY PLANS FOR ORIENTATION. ALL PLANS ARE SUBJECT TO CHANGE AS MAY BE APPROVED BY THE RELEVANT AUTHORITIES. ALL FLOOR AREAS ARE APPROXIMATE MEASUREMENTS ONLY AND ARE SUBJECT TO FINAL SURVEY. BP APPROVAL NO. A1839-00012-2017-BP01 DATED 14/06/2018

## 2 - BEDROOM

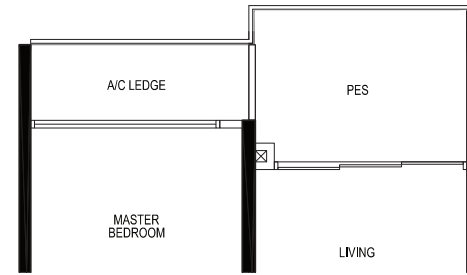
### TYPE B1a-P

56 sq m / 603 sq ft  
INCLUSIVE OF 6 SQ M PES & 3 SQ M A/C LEDGE

CEILING HEIGHT AT LIVING / DINING,  
AND BEDROOM IS APPROXIMATELY 4.3 M

TOWER 11M

UNIT  
#01-63



## 2 - BEDROOM

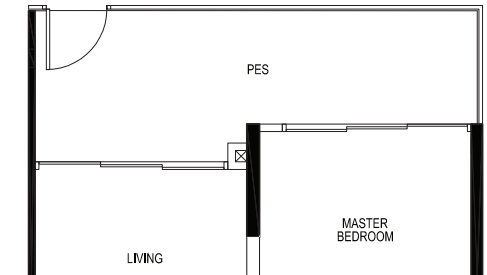
### TYPE B1b-P

67 sq m / 721 sq ft  
INCLUSIVE OF 11 SQ M PES & 4 SQ M A/C LEDGE

CEILING HEIGHT AT LIVING / DINING,  
AND BEDROOM IS APPROXIMATELY 4.3 M

TOWER 11A

UNIT  
#01-03



## 2 - BEDROOM

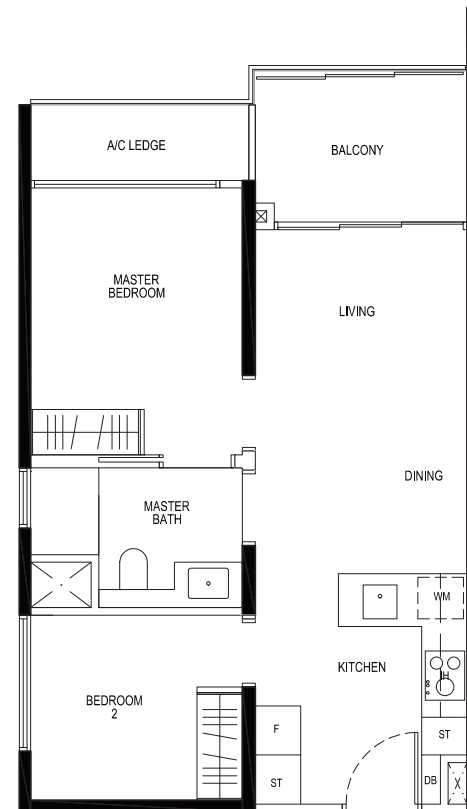
### TYPE B1a

56 sq m / 603 sq ft  
INCLUSIVE OF 6 SQ M BALCONY & 3 SQ M A/C LEDGE

5TH STOREY ONLY: CEILING HEIGHT AT LIVING / DINING,  
AND BEDROOM IS APPROXIMATELY 4.3 M

TOWER 11M

UNIT  
#02-63 TO #05-63



## 2 - BEDROOM

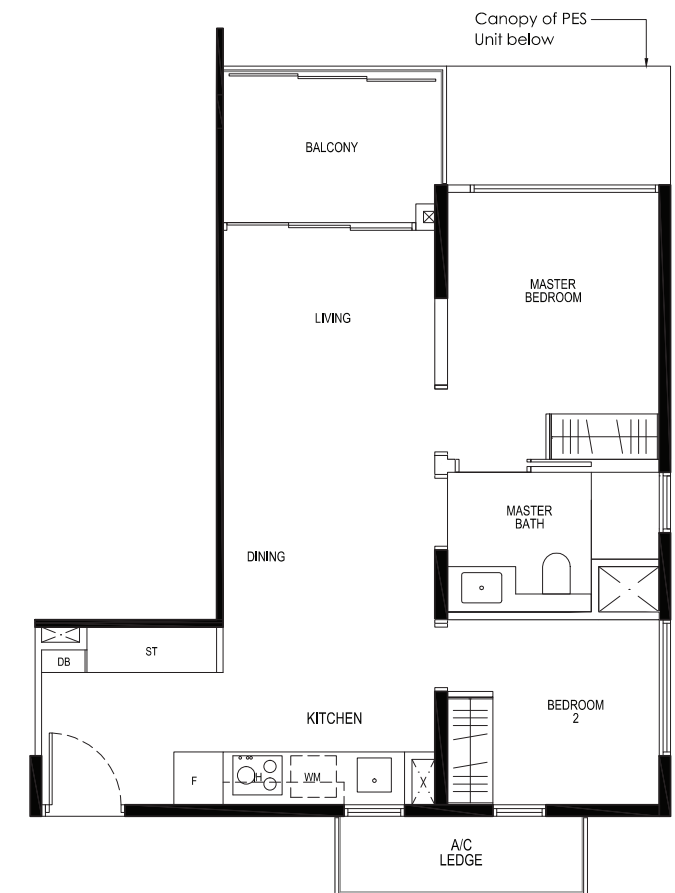
### TYPE B1b

63 sq m / 678 sq ft  
INCLUSIVE OF 6 SQ M BALCONY & 4 SQ M A/C LEDGE

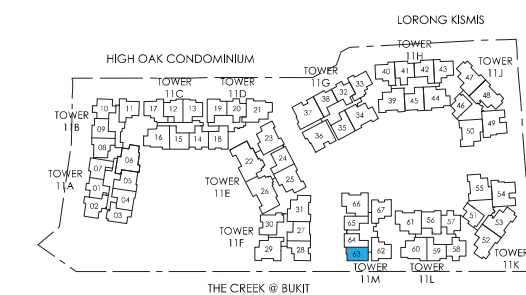
5TH STOREY ONLY: CEILING HEIGHT AT LIVING / DINING,  
AND BEDROOM IS APPROXIMATELY 4.3 M

TOWER 11A

UNIT  
#02-03 TO #05-03



LEGEND:  
F - FRIDGE GH - GAS HOB WC - WATER CLOSET  
WM - WASHER CUM DRYER ST - STORAGE A/C - AIR CONDITIONER  
IH - INDUCTION HOB DB - DISTRIBUTION BOARD PES - PRIVATE ENCLOSED SPACE

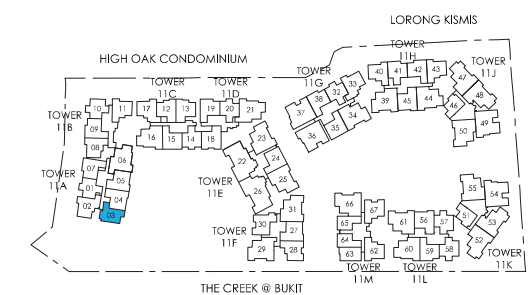


KEY PLAN

AREA INCLUDES A/C LEDGE, BALCONY, PES AND VOID AREA WHERE APPLICABLE. SOME UNITS ARE MIRROR IMAGES OF THE APARTMENT PLANS SHOWN IN THE BROCHURE. PLEASE REFER TO KEY PLANS FOR ORIENTATION. ALL PLANS ARE SUBJECT TO CHANGE AS MAY BE APPROVED BY THE RELEVANT AUTHORITIES. ALL FLOOR AREAS ARE APPROXIMATE MEASUREMENTS ONLY AND ARE SUBJECT TO FINAL SURVEY. BP APPROVAL NO. A1839-00012-2017-BP01 DATED 14/06/2018



LEGEND:  
F - FRIDGE GH - GAS HOB WC - WATER CLOSET  
WM - WASHER CUM DRYER ST - STORAGE A/C - AIR CONDITIONER  
IH - INDUCTION HOB DB - DISTRIBUTION BOARD PES - PRIVATE ENCLOSED SPACE



KEY PLAN

AREA INCLUDES A/C LEDGE, BALCONY, PES AND VOID AREA WHERE APPLICABLE. SOME UNITS ARE MIRROR IMAGES OF THE APARTMENT PLANS SHOWN IN THE BROCHURE. PLEASE REFER TO KEY PLANS FOR ORIENTATION. ALL PLANS ARE SUBJECT TO CHANGE AS MAY BE APPROVED BY THE RELEVANT AUTHORITIES. ALL FLOOR AREAS ARE APPROXIMATE MEASUREMENTS ONLY AND ARE SUBJECT TO FINAL SURVEY. BP APPROVAL NO. A1839-00012-2017-BP01 DATED 14/06/2018

## 2 - BEDROOM

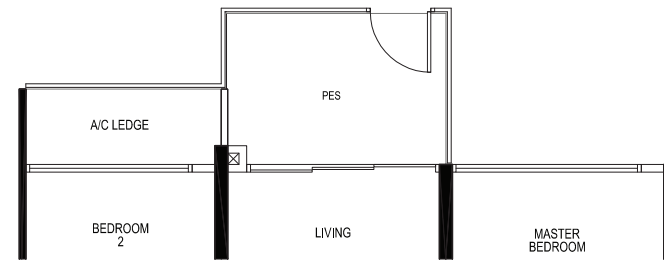
### TYPE B2a-P

62 sq m / 667 sq ft  
INCLUSIVE OF 6 SQ M PES & 3 SQ M A/C LEDGE

CEILING HEIGHT AT LIVING / DINING,  
AND BEDROOM IS APPROXIMATELY 4.3 M

TOWER 11D & 11G

UNIT  
#01-20  
#01-32



## 2 - BEDROOM

### TYPE B2b-P1

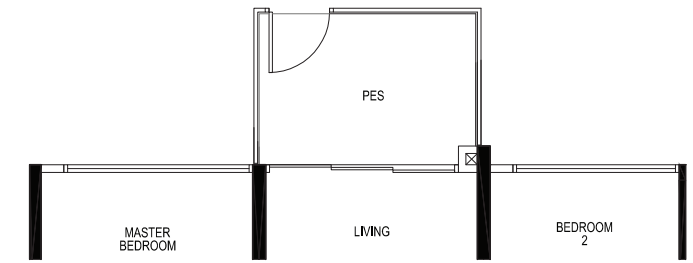
63 sq m / 678 sq ft  
INCLUSIVE OF 6 SQ M PES & 3 SQ M A/C LEDGE

CEILING HEIGHT AT LIVING / DINING,  
AND BEDROOM IS APPROXIMATELY 4.3 M

TOWER 11L

UNIT  
#01-57\*  
#01-58

\*MIRROR IMAGE



## 2 - BEDROOM

### TYPE B2a

62 sq m / 667 sq ft  
INCLUSIVE OF 6 SQ M BALCONY & 3 SQ M A/C LEDGE

5TH STOREY ONLY: CEILING HEIGHT AT LIVING / DINING,  
AND BEDROOM IS APPROXIMATELY 4.3 M

TOWER 11A, 11D & 11G

UNIT  
#03-01 TO #05-01\*  
#02-20 TO #05-20  
#02-32 TO #05-32

\*MIRROR IMAGE



## 2 - BEDROOM

### TYPE B2b-P2

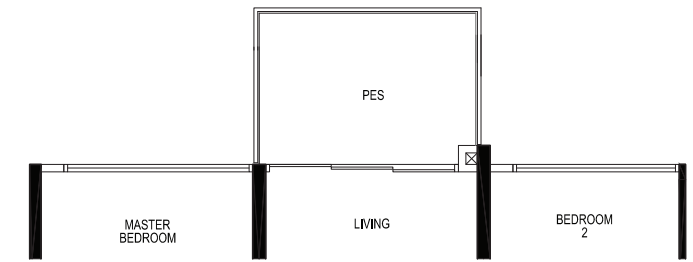
63 sq m / 678 sq ft  
INCLUSIVE OF 6 SQ M PES & 3 SQ M A/C LEDGE

CEILING HEIGHT AT LIVING / DINING,  
AND BEDROOM IS APPROXIMATELY 4.3 M

TOWER 11B

UNIT  
#01-10\*

\*MIRROR IMAGE



## 2 - BEDROOM

### TYPE B2b

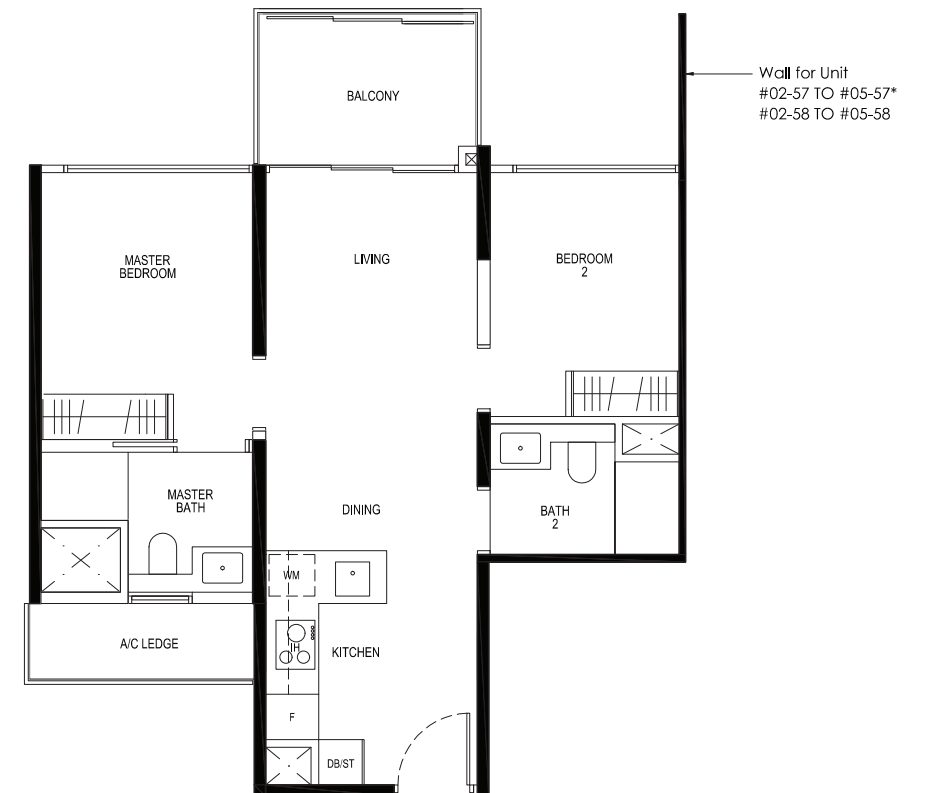
63 sq m / 678 sq ft  
INCLUSIVE OF 6 SQ M BALCONY & 3 SQ M A/C LEDGE

5TH STOREY ONLY: CEILING HEIGHT AT LIVING / DINING,  
AND BEDROOM IS APPROXIMATELY 4.3 M

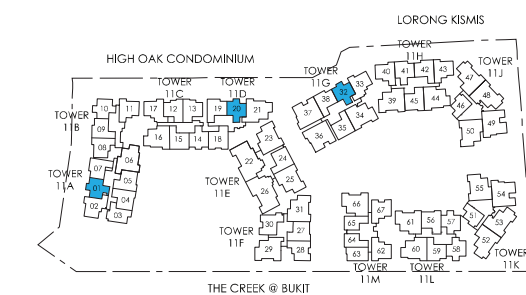
TOWER 11B & 11L

UNIT  
#02-10 TO #05-10\*  
#02-57 TO #05-57\*  
#02-58 TO #05-58

\*MIRROR IMAGE



LEGEND:  
F - FRIDGE GH - GAS HOB WC - WATER CLOSET  
WM - WASHER CUM DRYER ST - STORAGE A/C - AIR CONDITIONER  
IH - INDUCTION HOB DB - DISTRIBUTION BOARD PES - PRIVATE ENCLOSED SPACE

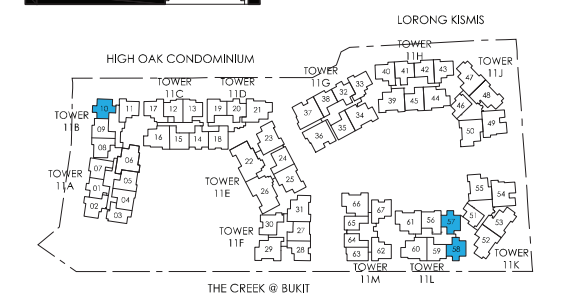


KEY PLAN

AREA INCLUDES A/C LEDGE, BALCONY, PES AND VOID AREA WHERE APPLICABLE. SOME UNITS ARE MIRROR IMAGES OF THE APARTMENT PLANS SHOWN IN THE BROCHURE. PLEASE REFER TO KEY PLANS FOR ORIENTATION. ALL PLANS ARE SUBJECT TO CHANGE AS MAY BE APPROVED BY THE RELEVANT AUTHORITIES. ALL FLOOR AREAS ARE APPROXIMATE MEASUREMENTS ONLY AND ARE SUBJECT TO FINAL SURVEY. BP APPROVAL NO. A1839-00012-2017-BP01 DATED 14/06/2018



LEGEND:  
F - FRIDGE GH - GAS HOB WC - WATER CLOSET  
WM - WASHER CUM DRYER ST - STORAGE A/C - AIR CONDITIONER  
IH - INDUCTION HOB DB - DISTRIBUTION BOARD PES - PRIVATE ENCLOSED SPACE



KEY PLAN

AREA INCLUDES A/C LEDGE, BALCONY, PES AND VOID AREA WHERE APPLICABLE. SOME UNITS ARE MIRROR IMAGES OF THE APARTMENT PLANS SHOWN IN THE BROCHURE. PLEASE REFER TO KEY PLANS FOR ORIENTATION. ALL PLANS ARE SUBJECT TO CHANGE AS MAY BE APPROVED BY THE RELEVANT AUTHORITIES. ALL FLOOR AREAS ARE APPROXIMATE MEASUREMENTS ONLY AND ARE SUBJECT TO FINAL SURVEY. BP APPROVAL NO. A1839-00012-2017-BP01 DATED 14/06/2018

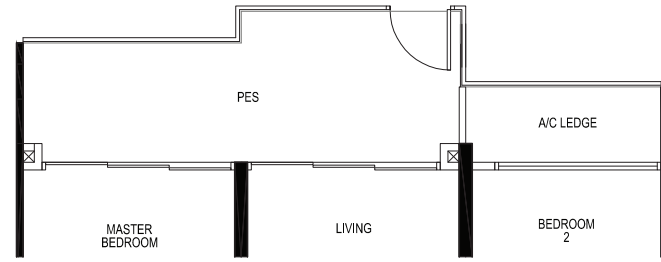
## 2 - BEDROOM TYPE B2c-P

67 sq m / 721 sq ft  
INCLUSIVE OF 11 SQ M PES & 3 SQ M A/C LEDGE

CEILING HEIGHT AT LIVING / DINING,  
AND BEDROOM IS APPROXIMATELY 4.3 M

TOWER 11C

UNIT  
#01-14



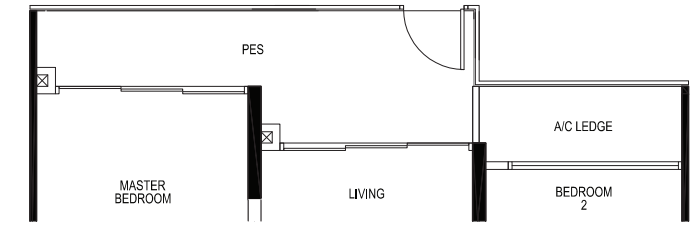
## 2 - BEDROOM TYPE B3-P

67 sq m / 721 sq ft  
INCLUSIVE OF 8 SQ M PES & 3 SQ M A/C LEDGE

CEILING HEIGHT AT LIVING / DINING,  
AND BEDROOM IS APPROXIMATELY 4.3 M

TOWER 11H

UNIT  
#01-41



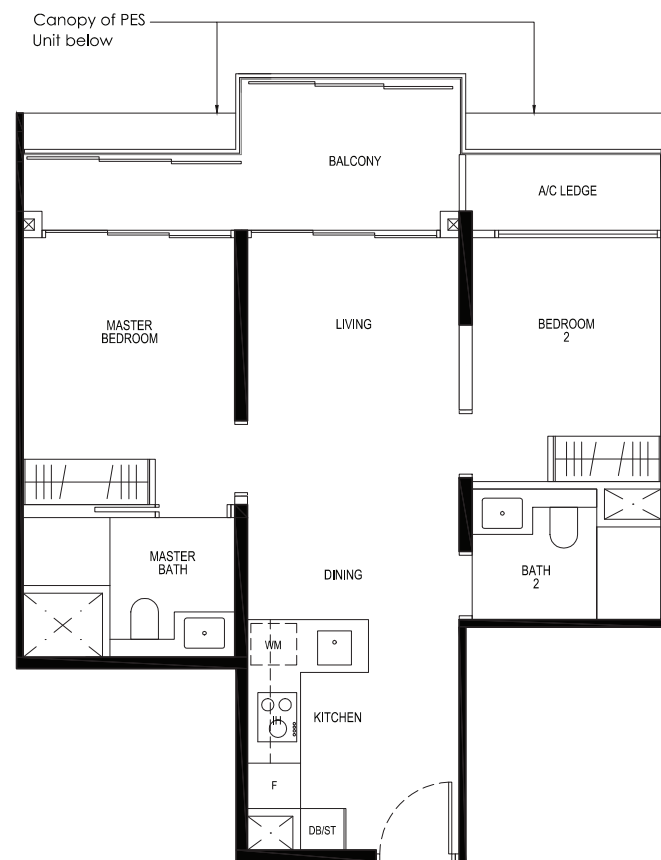
## 2 - BEDROOM TYPE B2c

65 sq m / 700 sq ft  
INCLUSIVE OF 9 SQ M BALCONY & 3 SQ M A/C LEDGE

5TH STOREY ONLY: CEILING HEIGHT AT LIVING / DINING,  
AND BEDROOM IS APPROXIMATELY 4.3 M

TOWER 11C

UNIT  
#02-14 TO #05-14



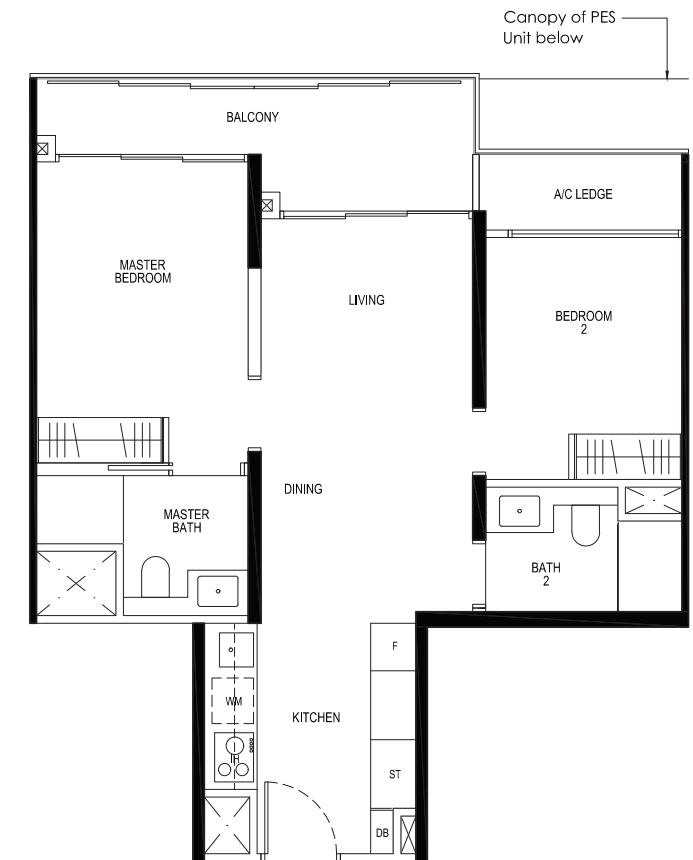
## 2 - BEDROOM TYPE B3

67 sq m / 721 sq ft  
INCLUSIVE OF 8 SQ M BALCONY & 3 SQ M A/C LEDGE

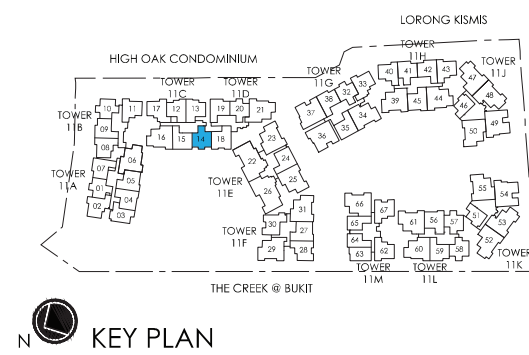
5TH STOREY ONLY: CEILING HEIGHT AT LIVING / DINING,  
AND BEDROOM IS APPROXIMATELY 4.3 M

TOWER 11H

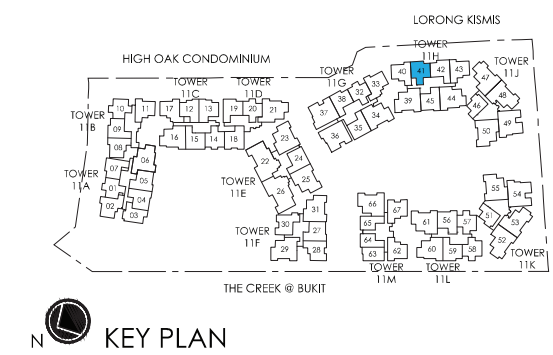
UNIT  
#02-41 TO #05-41



LEGEND:  
F - FRIDGE GH - GAS HOB WC - WATER CLOSET  
WM - WASHER CUM DRYER ST - STORAGE A/C - AIR CONDITIONER  
IH - INDUCTION HOB DB - DISTRIBUTION BOARD PES - PRIVATE ENCLOSED SPACE



LEGEND:  
F - FRIDGE GH - GAS HOB WC - WATER CLOSET  
WM - WASHER CUM DRYER ST - STORAGE A/C - AIR CONDITIONER  
IH - INDUCTION HOB DB - DISTRIBUTION BOARD PES - PRIVATE ENCLOSED SPACE



## 2 - BEDROOM TYPE B4a-P

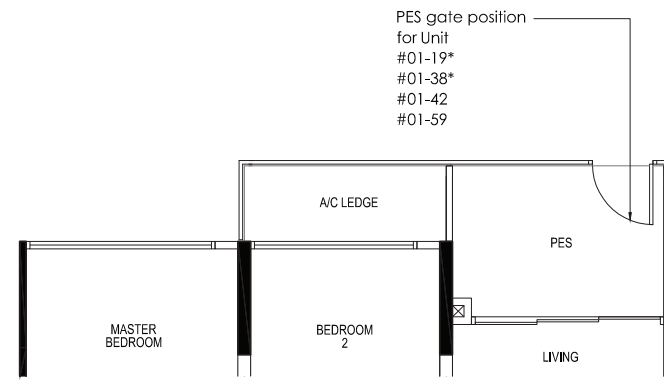
66 sq m / 710 sq ft  
INCLUSIVE OF 6 SQ M PES & 3 SQ M A/C LEDGE

CEILING HEIGHT AT LIVING / DINING,  
AND BEDROOM IS APPROXIMATELY 4.3 M

TOWER 11B, 11D, 11G, 11H & 11L

UNIT  
#01-09\*  
#01-19\*  
#01-38\*  
#01-42  
#01-59

\*MIRROR IMAGE



## 2 - BEDROOM TYPE B4a

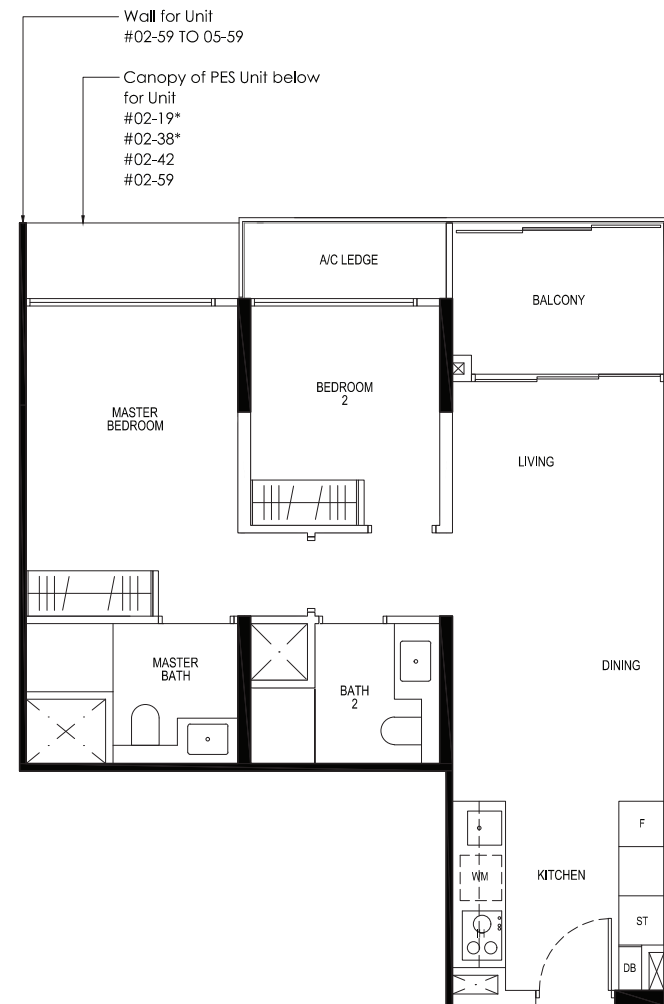
66 sq m / 710 sq ft  
INCLUSIVE OF 6 SQ M BALCONY & 3 SQ M A/C LEDGE

5TH STOREY ONLY: CEILING HEIGHT AT LIVING / DINING,  
AND BEDROOM IS APPROXIMATELY 4.3 M

TOWER 11A, 11B, 11D, 11G, 11H & 11L

UNIT  
#03-07 TO #05-07  
#02-09 TO #05-09\*  
#02-19 TO #05-19\*  
#02-38 TO #05-38\*  
#02-42 TO #05-42  
#02-59 TO #05-59

\*MIRROR IMAGE



## 2 - BEDROOM TYPE B4b-P

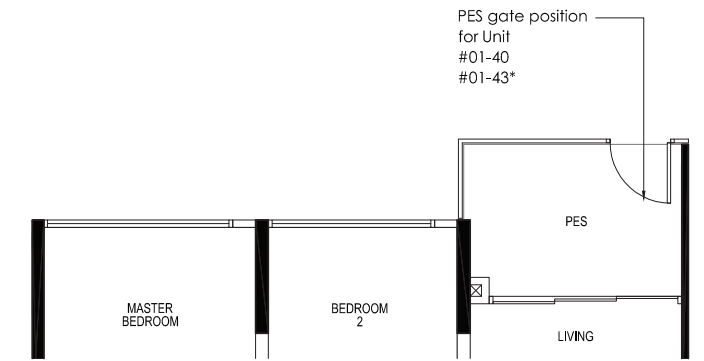
66 sq m / 710 sq ft  
INCLUSIVE OF 6 SQ M PES & 3 SQ M A/C LEDGE

CEILING HEIGHT AT LIVING / DINING,  
AND BEDROOM IS APPROXIMATELY 4.3 M

TOWER 11B & 11H

UNIT  
#01-08  
#01-40  
#01-43\*

\*MIRROR IMAGE



## 2 - BEDROOM TYPE B4b

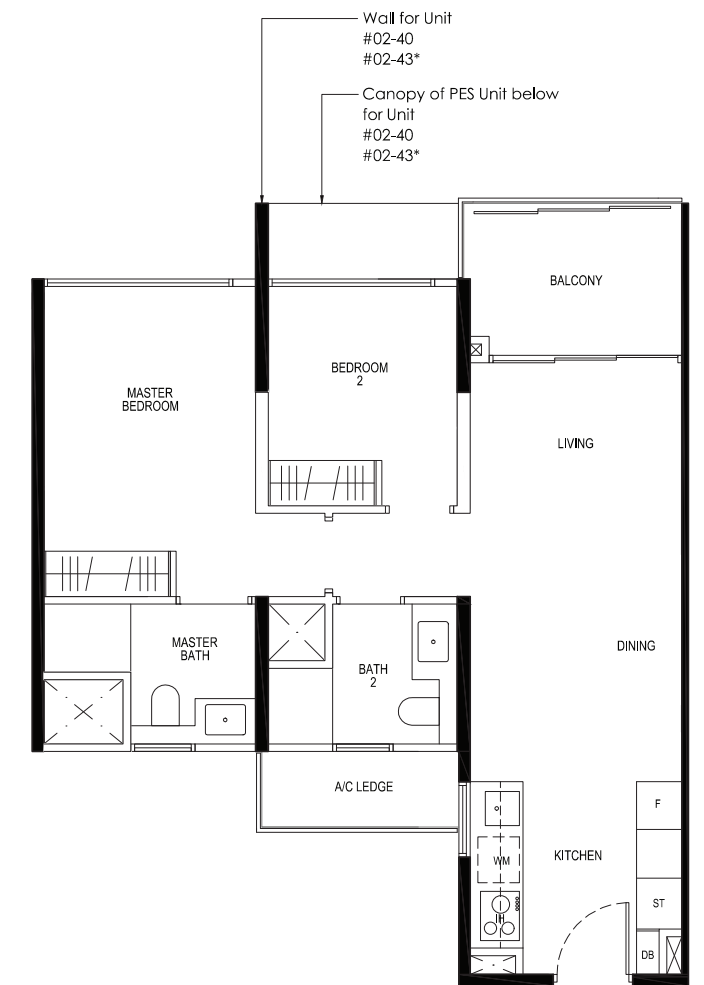
66 sq m / 710 sq ft  
INCLUSIVE OF 6 SQ M BALCONY & 3 SQ M A/C LEDGE

5TH STOREY ONLY: CEILING HEIGHT AT LIVING / DINING,  
AND BEDROOM IS APPROXIMATELY 4.3 M

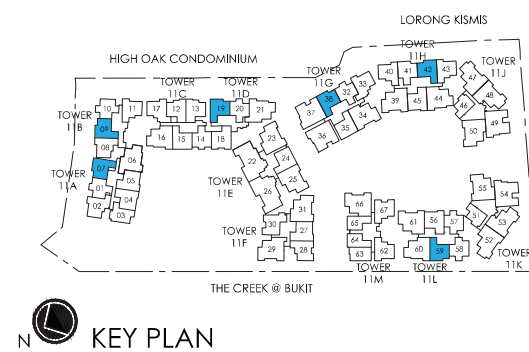
TOWER 11B & 11H

UNIT  
#02-08 TO #05-08  
#02-40 TO #05-40  
#02-43 TO #05-43\*

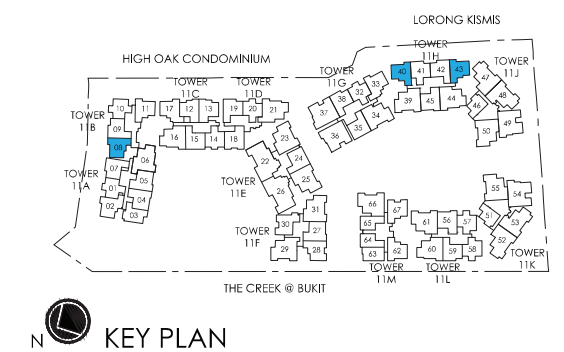
\*MIRROR IMAGE



LEGEND:  
F - FRIDGE GH - GAS HOB WC - WATER CLOSET  
WM - WASHER CUM DRYER ST - STORAGE A/C - AIR CONDITIONER  
IH - INDUCTION HOB DB - DISTRIBUTION BOARD PES - PRIVATE ENCLOSED SPACE



LEGEND:  
F - FRIDGE GH - GAS HOB WC - WATER CLOSET  
WM - WASHER CUM DRYER ST - STORAGE A/C - AIR CONDITIONER  
IH - INDUCTION HOB DB - DISTRIBUTION BOARD PES - PRIVATE ENCLOSED SPACE

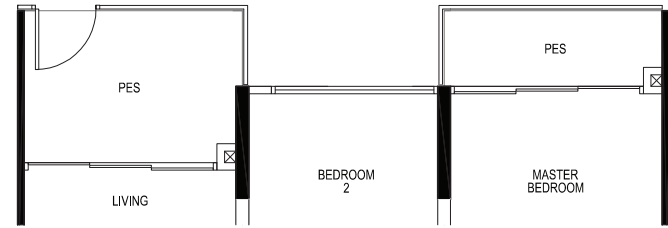


## 2 - BEDROOM TYPE B4c-P

69 sq m / 743 sq ft  
INCLUSIVE OF 9 SQ M PES & 3 SQ M A/C LEDGE  
CEILING HEIGHT AT LIVING / DINING,  
AND BEDROOM IS APPROXIMATELY 4.3 M

TOWER 11F

UNIT  
#01-28

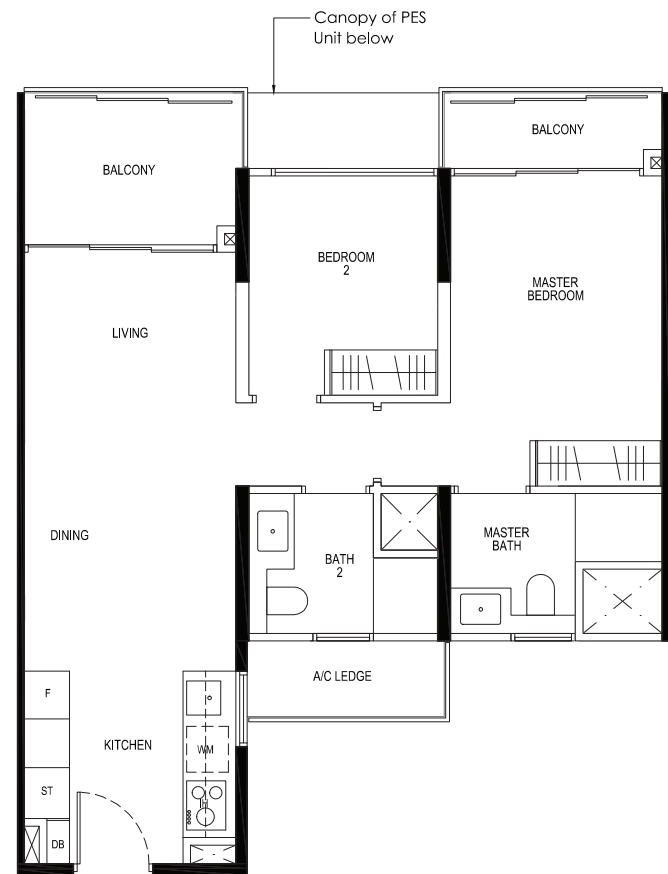


## 2 - BEDROOM TYPE B4c

69 sq m / 743 sq ft  
INCLUSIVE OF 9 SQ M BALCONY & 3 SQ M A/C LEDGE  
5TH STOREY ONLY: CEILING HEIGHT AT LIVING / DINING,  
AND BEDROOM IS APPROXIMATELY 4.3 M

TOWER 11F

UNIT  
#02-28 TO #05-28



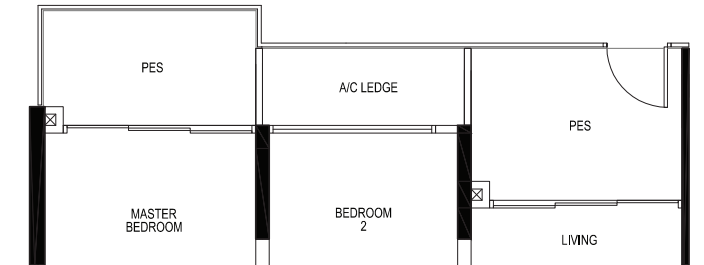
## 2 - BEDROOM TYPE B4d-P

70 sq m / 753 sq ft  
INCLUSIVE OF 11 SQ M PES & 3 SQ M A/C LEDGE  
CEILING HEIGHT AT LIVING / DINING,  
AND BEDROOM IS APPROXIMATELY 4.3 M

TOWER 11C, 11E & 11G

UNIT  
#01-15  
#01-24  
#01-35\*

\*MIRROR IMAGE



## 2 - BEDROOM TYPE B4d

69 sq m / 743 sq ft  
INCLUSIVE OF 9 SQ M BALCONY & 3 SQ M A/C LEDGE  
5TH STOREY ONLY: CEILING HEIGHT AT LIVING / DINING,  
AND BEDROOM IS APPROXIMATELY 4.3 M

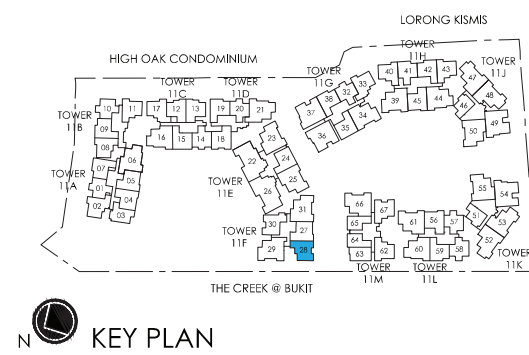
TOWER 11C, 11E & 11G

UNIT  
#02-15 TO #05-15  
#02-24 TO #05-24  
#02-35 TO #05-35\*

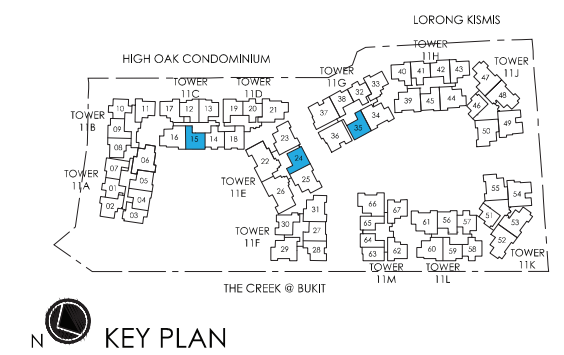
\*MIRROR IMAGE



LEGEND:  
F - FRIDGE GH - GAS HOB WC - WATER CLOSET  
WM - WASHER CUM DRYER ST - STORAGE A/C - AIR CONDITIONER  
IH - INDUCTION HOB DB - DISTRIBUTION BOARD PES - PRIVATE ENCLOSED SPACE



LEGEND:  
F - FRIDGE GH - GAS HOB WC - WATER CLOSET  
WM - WASHER CUM DRYER ST - STORAGE A/C - AIR CONDITIONER  
IH - INDUCTION HOB DB - DISTRIBUTION BOARD PES - PRIVATE ENCLOSED SPACE



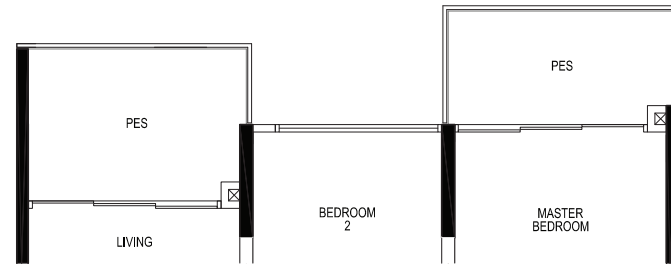
## 2 - BEDROOM TYPE B4e-P1

71 sq m / 764 sq ft  
INCLUSIVE OF 11 SQ M PES & 3 SQ M A/C LEDGE

CEILING HEIGHT AT LIVING / DINING,  
AND BEDROOM IS APPROXIMATELY 4.3 M

TOWER 11M

UNIT  
#01-67



## 2 - BEDROOM TYPE B4e-P2

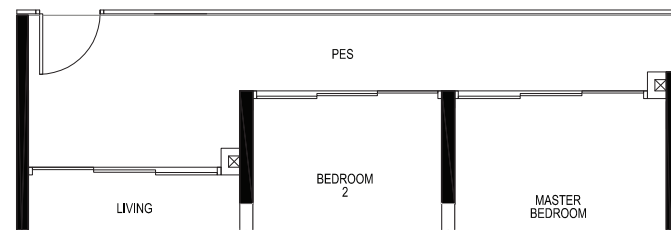
72 sq m / 775 sq ft  
INCLUSIVE OF 12 SQ M PES & 3 SQ M A/C LEDGE

CEILING HEIGHT AT LIVING / DINING,  
AND BEDROOM IS APPROXIMATELY 4.3 M

TOWER 11B & 11M

UNIT  
#01-11  
#01-62\*

\*MIRROR IMAGE



## 2 - BEDROOM TYPE B4e

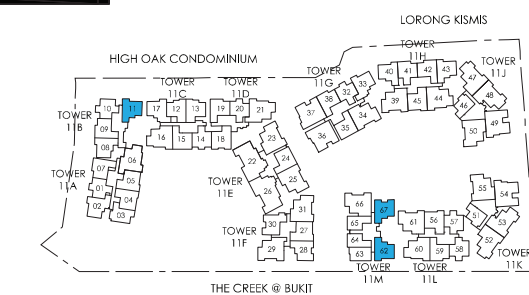
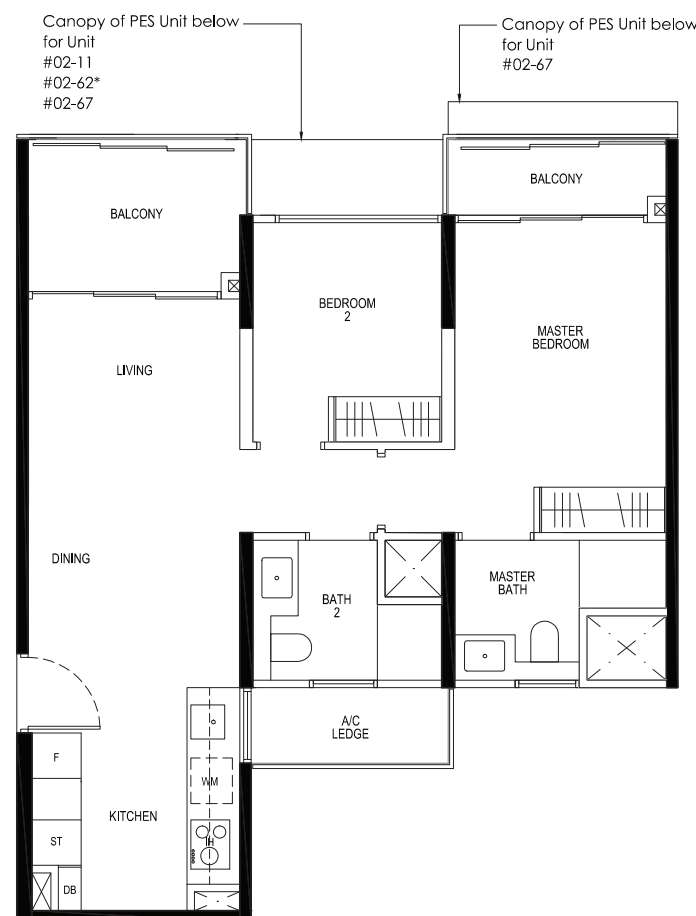
69 sq m / 743 sq ft  
INCLUSIVE OF 9 SQ M BALCONY & 3 SQ M A/C LEDGE

5TH STOREY ONLY: CEILING HEIGHT AT LIVING / DINING,  
AND BEDROOM IS APPROXIMATELY 4.3 M

TOWER 11B & 11M

UNIT  
#02-11 TO #05-11  
#02-62 TO #05-62\*  
#02-67 TO #05-67

\*MIRROR IMAGE



LEGEND:  
F - FRIDGE GH - GAS HOB WC - WATER CLOSET  
WM - WASHER CUM DRYER ST - STORAGE A/C - AIR CONDITIONER  
IH - INDUCTION HOB DB - DISTRIBUTION BOARD PES - PRIVATE ENCLOSED SPACE

KEY PLAN

AREA INCLUDES A/C LEDGE, BALCONY, PES AND VOID AREA WHERE APPLICABLE. SOME UNITS ARE MIRROR IMAGES OF THE APARTMENT PLANS SHOWN IN THE BROCHURE. PLEASE REFER TO KEY PLANS FOR ORIENTATION. ALL PLANS ARE SUBJECT TO CHANGE AS MAY BE APPROVED BY THE RELEVANT AUTHORITIES. ALL FLOOR AREAS ARE APPROXIMATE MEASUREMENTS ONLY AND ARE SUBJECT TO FINAL SURVEY. BP APPROVAL NO. A1839-00012-2017-BP01 DATED 14/06/2018

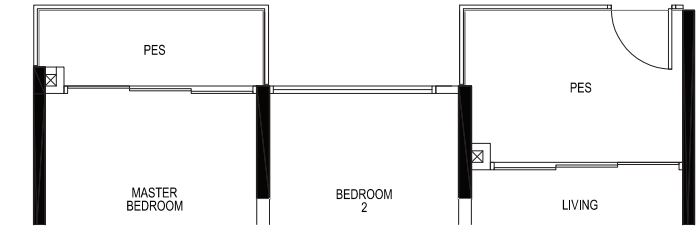
## 2 - BEDROOM TYPE B4f-P

69 sq m / 743 sq ft  
INCLUSIVE OF 9 SQ M PES & 3 SQ M A/C LEDGE

CEILING HEIGHT AT LIVING / DINING,  
AND BEDROOM IS APPROXIMATELY 4.3 M

TOWER 11F

UNIT  
#01-30



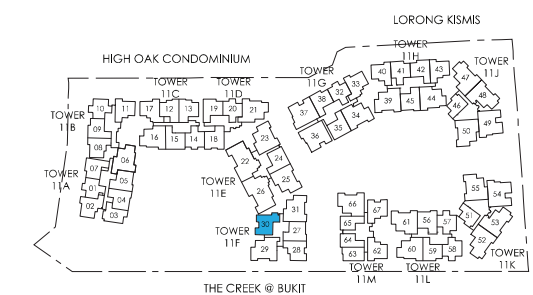
## 2 - BEDROOM TYPE B4f

71 sq m / 764 sq ft  
INCLUSIVE OF 11 SQ M BALCONY & 3 SQ M A/C LEDGE

5TH STOREY ONLY: CEILING HEIGHT AT LIVING / DINING,  
AND BEDROOM IS APPROXIMATELY 4.3 M

TOWER 11F

UNIT  
#02-30 TO #05-30



LEGEND:  
F - FRIDGE GH - GAS HOB WC - WATER CLOSET  
WM - WASHER CUM DRYER ST - STORAGE A/C - AIR CONDITIONER  
IH - INDUCTION HOB DB - DISTRIBUTION BOARD PES - PRIVATE ENCLOSED SPACE

KEY PLAN

AREA INCLUDES A/C LEDGE, BALCONY, PES AND VOID AREA WHERE APPLICABLE. SOME UNITS ARE MIRROR IMAGES OF THE APARTMENT PLANS SHOWN IN THE BROCHURE. PLEASE REFER TO KEY PLANS FOR ORIENTATION. ALL PLANS ARE SUBJECT TO CHANGE AS MAY BE APPROVED BY THE RELEVANT AUTHORITIES. ALL FLOOR AREAS ARE APPROXIMATE MEASUREMENTS ONLY AND ARE SUBJECT TO FINAL SURVEY. BP APPROVAL NO. A1839-00012-2017-BP01 DATED 14/06/2018

## 2 - BEDROOM

### TYPE B5a-P

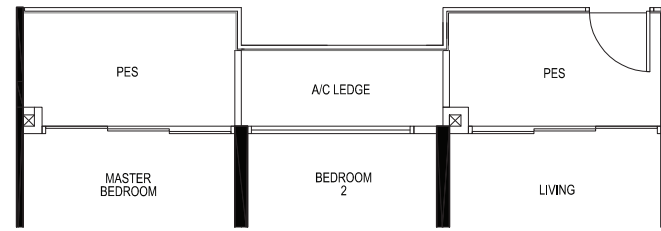
73 sq m / 786 sq ft  
INCLUSIVE OF 9 SQ M PES & 3 SQ M A/C LEDGE

CEILING HEIGHT AT LIVING / DINING, BEDROOM AND STUDY IS APPROXIMATELY 4.3 M

TOWER 11A, 11D & 11F

UNIT  
#01-04\*  
#01-05  
#01-18\*  
#01-27

\*MIRROR IMAGE



## 2 - BEDROOM

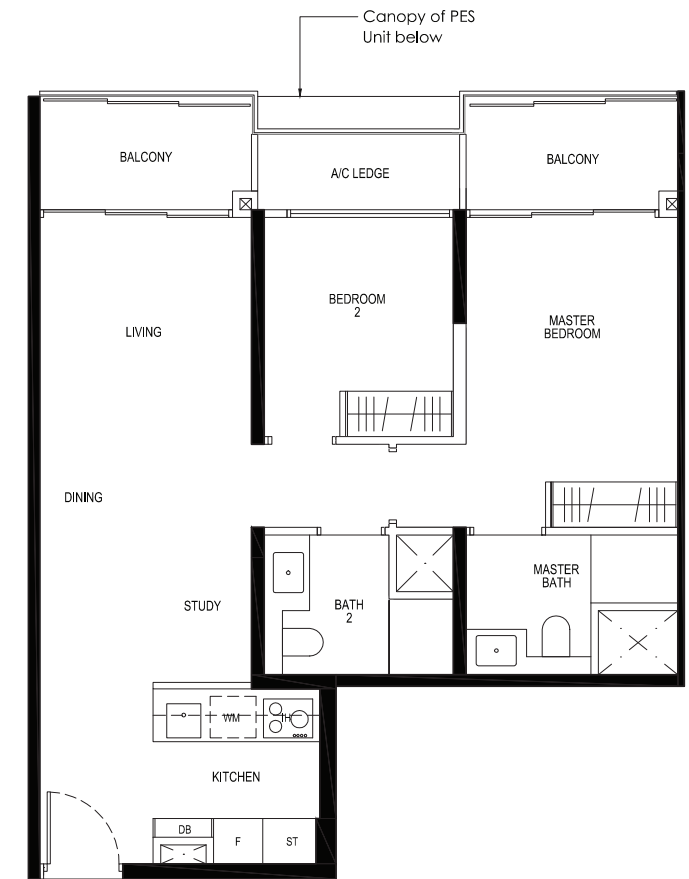
### TYPE B5b

73 sq m / 786 sq ft  
INCLUSIVE OF 9 SQ M BALCONY & 3 SQ M A/C LEDGE

5TH STOREY ONLY: CEILING HEIGHT AT LIVING / DINING, BEDROOM AND STUDY IS APPROXIMATELY 4.3 M

TOWER 11D

UNIT  
#02-18 TO #05-18



## 2 - BEDROOM

### TYPE B5a

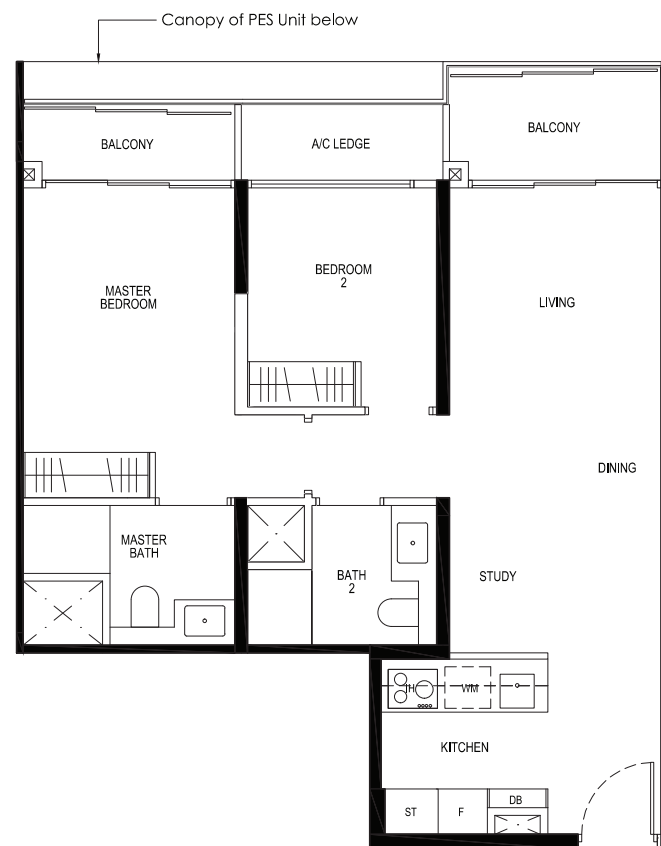
72 sq m / 775 sq ft  
INCLUSIVE OF 8 SQ M BALCONY & 3 SQ M A/C LEDGE

5TH STOREY ONLY: CEILING HEIGHT AT LIVING / DINING, BEDROOM AND STUDY IS APPROXIMATELY 4.3 M

TOWER 11A, 11F, 11H & 11L

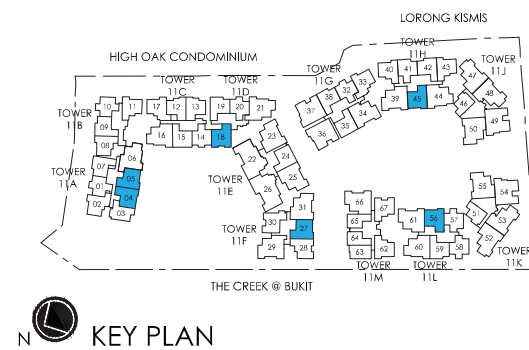
UNIT  
#02-04 TO #05-04\*  
#02-05 TO #05-05  
#02-27 TO #05-27  
#02-45 TO #05-45\*  
#02-56 TO #05-56

\*MIRROR IMAGE



0 1 3 5M

LEGEND:  
F - FRIDGE GH - GAS HOB WC - WATER CLOSET  
WM - WASHER CUM DRYER ST - STORAGE A/C - AIR CONDITIONER  
IH - INDUCTION HOB DB - DISTRIBUTION BOARD PES - PRIVATE ENCLOSED SPACE

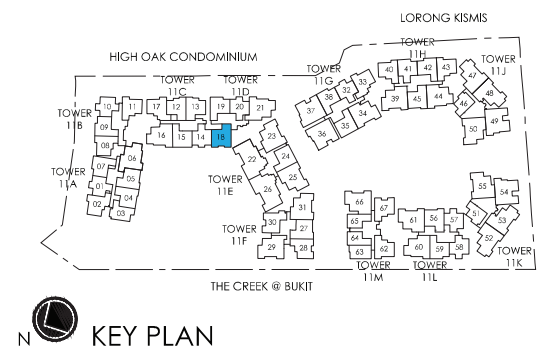


KEY PLAN

AREA INCLUDES A/C LEDGE, BALCONY, PES AND VOID AREA WHERE APPLICABLE. SOME UNITS ARE MIRROR IMAGES OF THE APARTMENT PLANS SHOWN IN THE BROCHURE. PLEASE REFER TO KEY PLANS FOR ORIENTATION. ALL PLANS ARE SUBJECT TO CHANGE AS MAY BE APPROVED BY THE RELEVANT AUTHORITIES. ALL FLOOR AREAS ARE APPROXIMATE MEASUREMENTS ONLY AND ARE SUBJECT TO FINAL SURVEY. BP APPROVAL NO. A1839-00012-2017-BP01 DATED 14/06/2018

0 1 3 5M

LEGEND:  
F - FRIDGE GH - GAS HOB WC - WATER CLOSET  
WM - WASHER CUM DRYER ST - STORAGE A/C - AIR CONDITIONER  
IH - INDUCTION HOB DB - DISTRIBUTION BOARD PES - PRIVATE ENCLOSED SPACE



KEY PLAN

AREA INCLUDES A/C LEDGE, BALCONY, PES AND VOID AREA WHERE APPLICABLE. SOME UNITS ARE MIRROR IMAGES OF THE APARTMENT PLANS SHOWN IN THE BROCHURE. PLEASE REFER TO KEY PLANS FOR ORIENTATION. ALL PLANS ARE SUBJECT TO CHANGE AS MAY BE APPROVED BY THE RELEVANT AUTHORITIES. ALL FLOOR AREAS ARE APPROXIMATE MEASUREMENTS ONLY AND ARE SUBJECT TO FINAL SURVEY. BP APPROVAL NO. A1839-00012-2017-BP01 DATED 14/06/2018

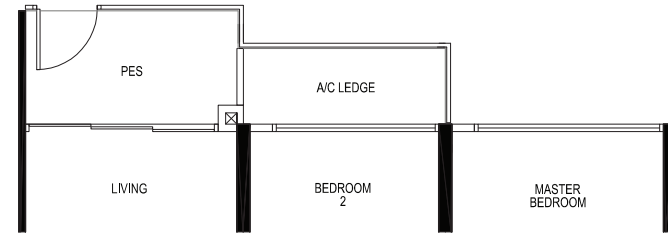
## 2 - BEDROOM TYPE B5c-P

69 sq m / 743 sq ft  
INCLUSIVE OF 5 SQ M PES & 3 SQ M A/C LEDGE.  
CEILING HEIGHT AT LIVING / DINING,  
BEDROOM AND STUDY IS APPROXIMATELY 4.3 M

TOWER 11C

UNIT  
#01-12\*  
#01-13

\*MIRROR IMAGE



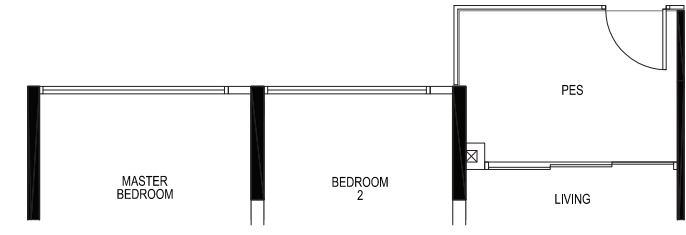
## 2 - BEDROOM TYPE B6-P

72 sq m / 775 sq ft  
INCLUSIVE OF 6 SQ M PES & 4 SQ M A/C LEDGE  
CEILING HEIGHT AT LIVING / DINING,  
BEDROOM AND STUDY IS APPROXIMATELY 4.3 M

TOWER 11C & 11G

UNIT  
#01-17  
#01-33\*

\*MIRROR IMAGE



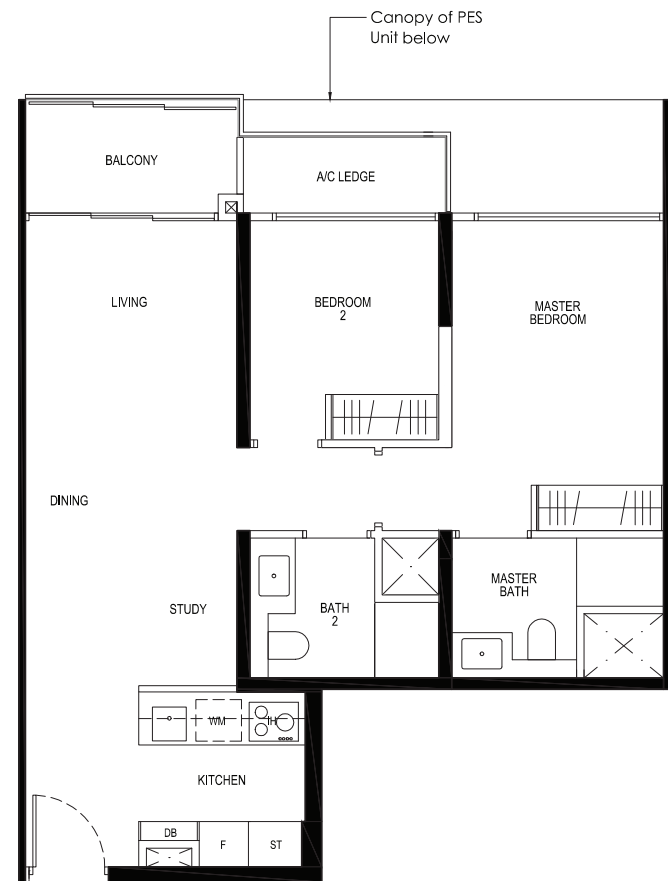
## 2 - BEDROOM TYPE B5c

69 sq m / 743 sq ft  
INCLUSIVE OF 5 SQ M BALCONY & 3 SQ M AC LEDGE.  
5TH STOREY ONLY: CEILING HEIGHT AT LIVING / DINING,  
BEDROOM AND STUDY IS APPROXIMATELY 4.3 M

TOWER 11C

UNIT  
#02-12 TO #05-12\*  
#02-13 TO #05-13

\*MIRROR IMAGE



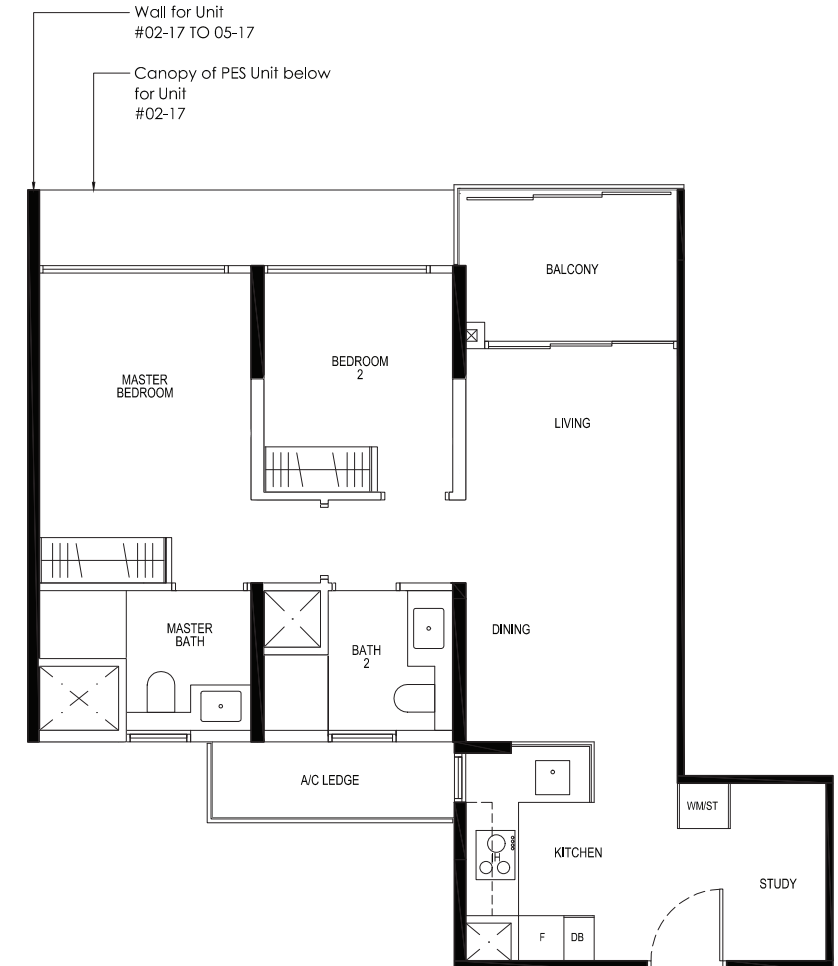
## 2 - BEDROOM TYPE B6

72 sq m / 775 sq ft  
INCLUSIVE OF 6 SQ M BALCONY & 4 SQ M A/C LEDGE  
5TH STOREY ONLY: CEILING HEIGHT AT LIVING / DINING,  
BEDROOM AND STUDY IS APPROXIMATELY 4.3 M

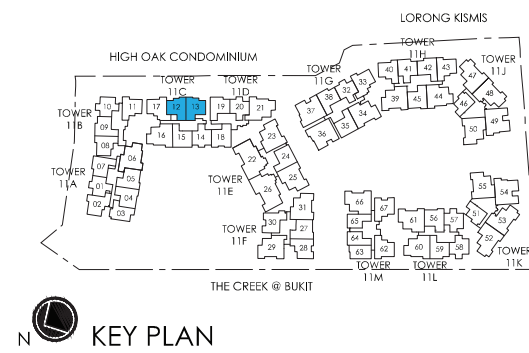
TOWER 11A, 11C & 11G

UNIT  
#03-02 TO #05-02  
#02-17 TO #05-17  
#02-33 TO #05-33\*

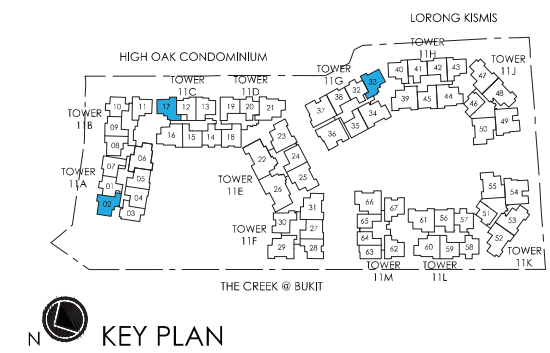
\*MIRROR IMAGE



LEGEND:  
F - FRIDGE GH - GAS HOB WC - WATER CLOSET  
WM - WASHER CUM DRYER ST - STORAGE A/C - AIR CONDITIONER  
IH - INDUCTION HOB DB - DISTRIBUTION BOARD PES - PRIVATE ENCLOSED SPACE



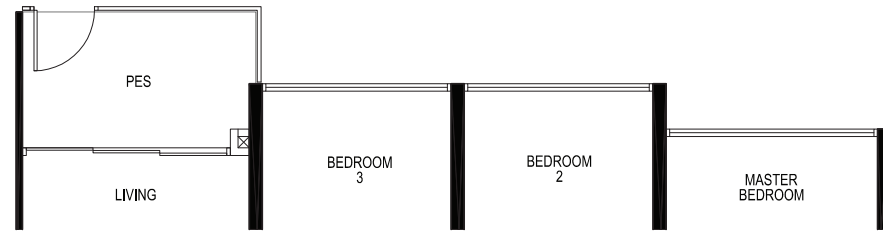
LEGEND:  
F - FRIDGE GH - GAS HOB WC - WATER CLOSET  
WM - WASHER CUM DRYER ST - STORAGE A/C - AIR CONDITIONER  
IH - INDUCTION HOB DB - DISTRIBUTION BOARD PES - PRIVATE ENCLOSED SPACE



### 3 - BEDROOM TYPE C1a-P1

93 sq m / 1001 sq ft  
 INCLUSIVE OF 6 SQ M PES & 7 SQ M A/C LEDGE  
 CEILING HEIGHT AT LIVING / DINING,  
 BEDROOM AND STUDY IS APPROXIMATELY 4.3 M  
 TOWER 11L

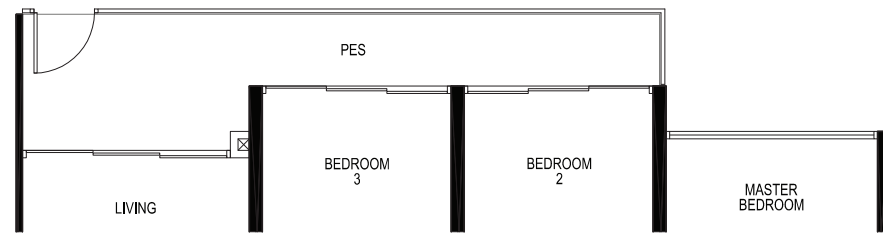
UNIT  
 #01-60



### 3 - BEDROOM TYPE C1a-P2

99 sq m / 1066 sq ft  
 INCLUSIVE OF 11 SQ M PES & 7 SQ M A/C LEDGE  
 CEILING HEIGHT AT LIVING / DINING,  
 BEDROOM AND STUDY IS APPROXIMATELY 4.3 M  
 TOWER 11C

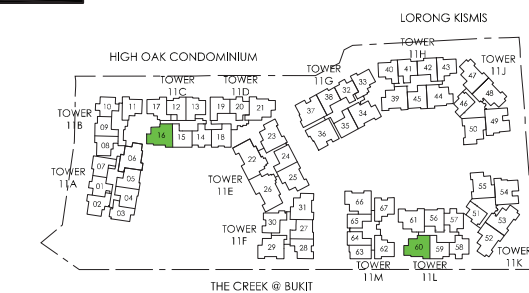
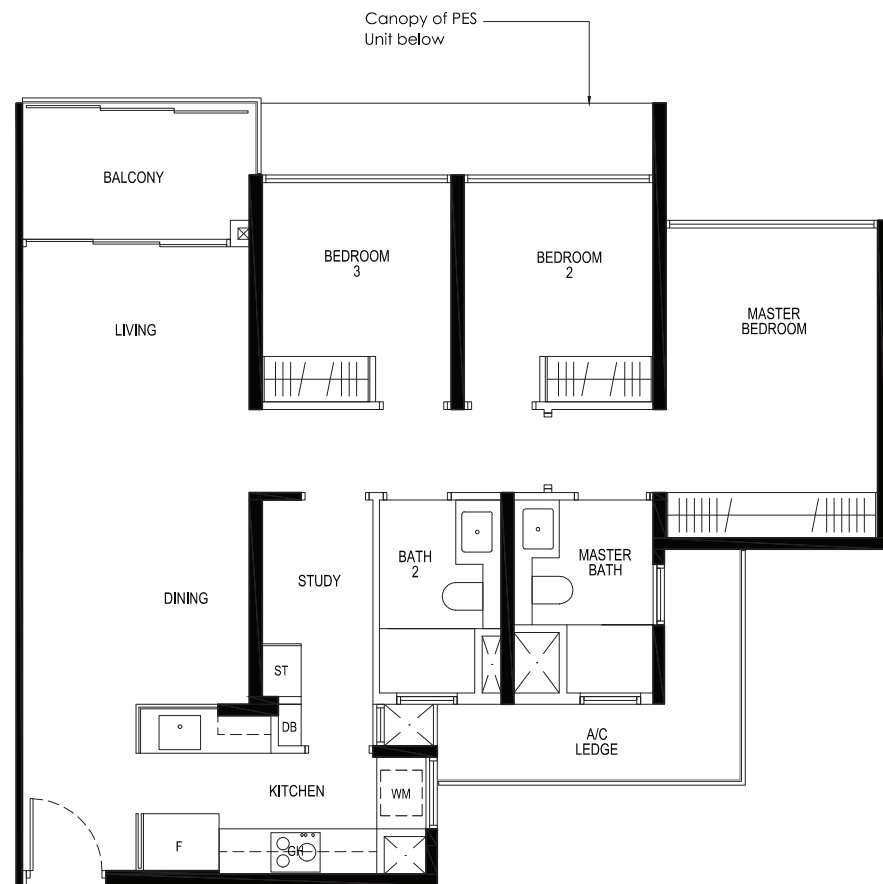
UNIT  
 #01-16



### 3 - BEDROOM TYPE C1a

93 sq m / 1001 sq ft  
 INCLUSIVE OF 6 SQ M BALCONY & 7 SQ M A/C LEDGE  
 5TH STOREY ONLY: CEILING HEIGHT AT LIVING / DINING,  
 BEDROOM AND STUDY IS APPROXIMATELY 4.3 M  
 TOWER 11C & 11L

UNIT  
 #02-16 TO #05-16  
 #02-60 TO #05-60



- LEGEND:
- F - FRIDGE
  - WM - WASHER CUM DRYER
  - IH - INDUCTION HOB
  - GH - GAS HOB
  - ST - STORAGE
  - DB - DISTRIBUTION BOARD
  - WC - WATER CLOSET
  - A/C - AIR CONDITIONER
  - PES - PRIVATE ENCLOSED SPACE



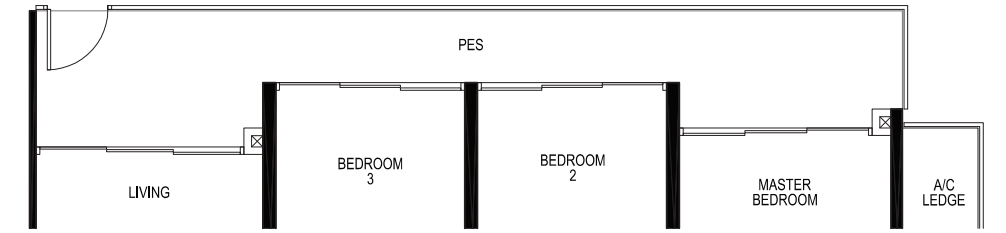
AREA INCLUDES A/C LEDGE, BALCONY, PES AND VOID AREA WHERE APPLICABLE. SOME UNITS ARE MIRROR IMAGES OF THE APARTMENT PLANS SHOWN IN THE BROCHURE. PLEASE REFER TO KEY PLANS FOR ORIENTATION. ALL PLANS ARE SUBJECT TO CHANGE AS MAY BE APPROVED BY THE RELEVANT AUTHORITIES. ALL FLOOR AREAS ARE APPROXIMATE MEASUREMENTS ONLY AND ARE SUBJECT TO FINAL SURVEY. BP APPROVAL NO. A1839-00012-2017-BP01 DATED 14/06/2018

### 3 - BEDROOM TYPE C1b-P

103 sq m / 1109 sq ft  
 INCLUSIVE OF 16 SQ M PES & 7 SQ M A/C LEDGE  
 CEILING HEIGHT AT LIVING / DINING,  
 BEDROOM AND STUDY IS APPROXIMATELY 4.3 M  
 TOWER 11J & 11K

UNIT  
 #01-47\*  
 #01-48  
 #01-52  
 #01-53\*

\*MIRROR IMAGE

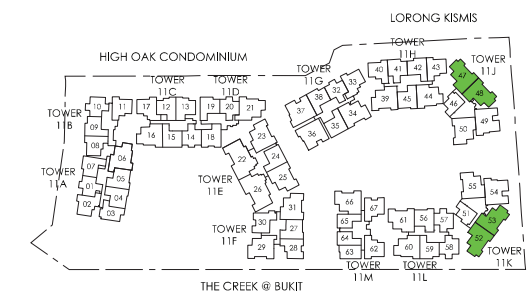


### 3 - BEDROOM TYPE C1b

98 sq m / 1055 sq ft  
 INCLUSIVE OF 11 SQ M BALCONY & 7 SQ M A/C LEDGE  
 5TH STOREY ONLY: CEILING HEIGHT AT LIVING / DINING,  
 BEDROOM AND STUDY IS APPROXIMATELY 4.3 M  
 TOWER 11J & 11K

UNIT  
 #02-47 TO #05-47\*  
 #02-48 TO #05-48  
 #02-52 TO #05-52  
 #02-53 TO #05-53\*

\*MIRROR IMAGE



- LEGEND:
- F - FRIDGE
  - WM - WASHER CUM DRYER
  - IH - INDUCTION HOB
  - GH - GAS HOB
  - ST - STORAGE
  - DB - DISTRIBUTION BOARD
  - WC - WATER CLOSET
  - A/C - AIR CONDITIONER
  - PES - PRIVATE ENCLOSED SPACE



AREA INCLUDES A/C LEDGE, BALCONY, PES AND VOID AREA WHERE APPLICABLE. SOME UNITS ARE MIRROR IMAGES OF THE APARTMENT PLANS SHOWN IN THE BROCHURE. PLEASE REFER TO KEY PLANS FOR ORIENTATION. ALL PLANS ARE SUBJECT TO CHANGE AS MAY BE APPROVED BY THE RELEVANT AUTHORITIES. ALL FLOOR AREAS ARE APPROXIMATE MEASUREMENTS ONLY AND ARE SUBJECT TO FINAL SURVEY. BP APPROVAL NO. A1839-00012-2017-BP01 DATED 14/06/2018

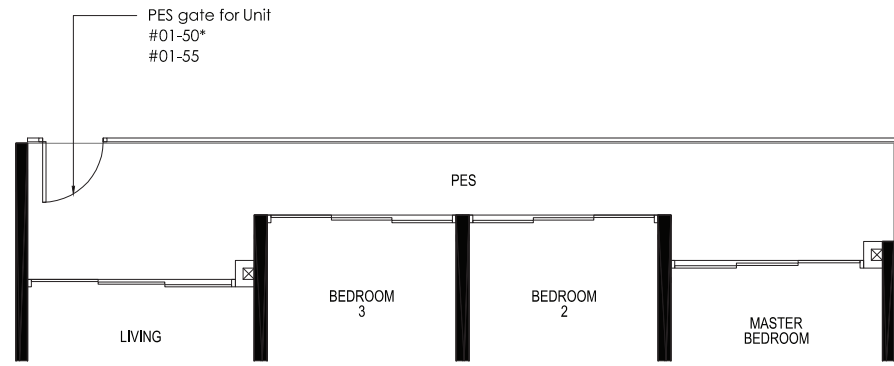
### 3 - BEDROOM TYPE C1c-P

104 sq m / 1119 sq ft  
 INCLUSIVE OF 16 SQ M PES & 7 SQ M A/C LEDGE  
 CEILING HEIGHT AT LIVING / DINING,  
 BEDROOM AND STUDY IS APPROXIMATELY 4.3 M

TOWER 11J, 11K & 11M

UNIT  
 #01-50\*  
 #01-55  
 #01-66\*

\*MIRROR IMAGE



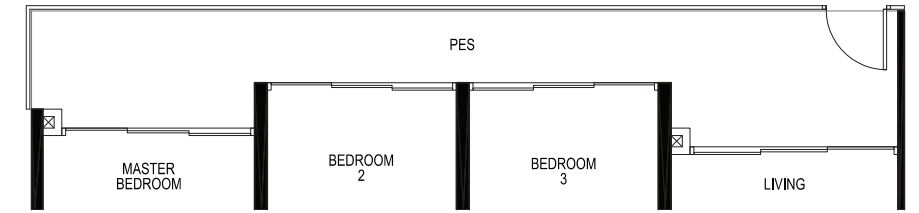
### 3 - BEDROOM TYPE C1d-P

104 sq m / 1119 sq ft  
 INCLUSIVE OF 16 SQ M PES & 7 SQ M A/C LEDGE  
 CEILING HEIGHT AT LIVING / DINING,  
 BEDROOM AND STUDY IS APPROXIMATELY 4.3 M

TOWER 11E, 11F, 11G, 11H & 11L

UNIT  
 #01-23  
 #01-31  
 #01-34  
 #01-39\*  
 #01-61

\*MIRROR IMAGE



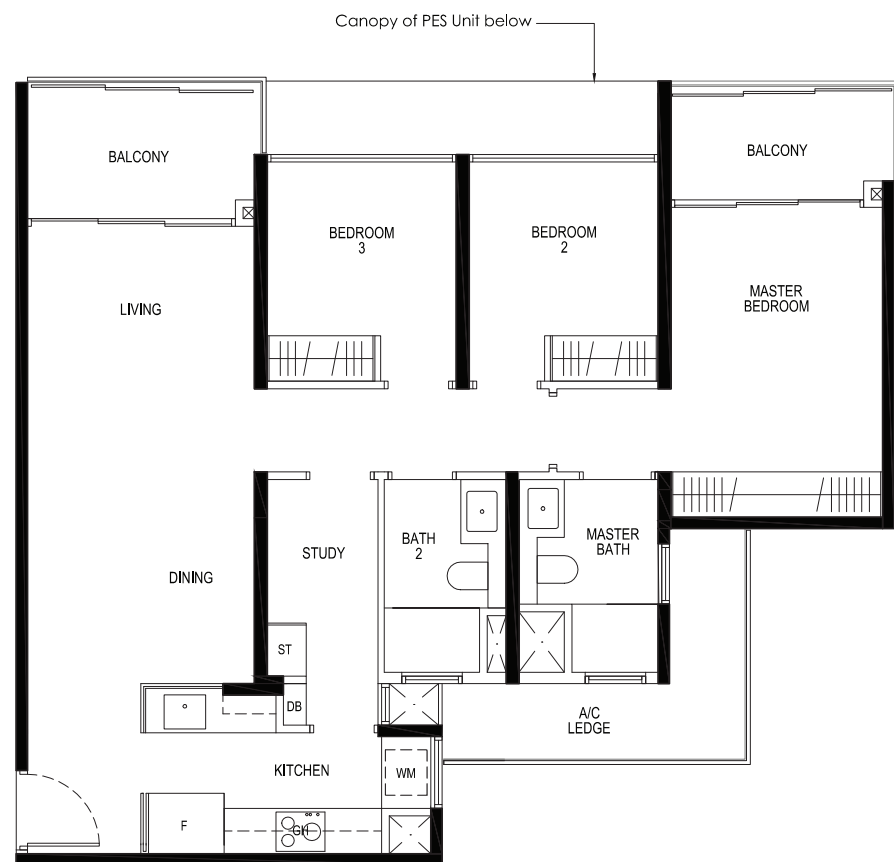
### 3 - BEDROOM TYPE C1c

98 sq m / 1055 sq ft  
 INCLUSIVE OF 10 SQ M BALCONY & 7 SQ M A/C LEDGE  
 5TH STOREY ONLY: CEILING HEIGHT AT LIVING / DINING,  
 BEDROOM AND STUDY IS APPROXIMATELY 4.3 M

TOWER 11J, 11K & 11M

UNIT  
 #02-50 TO #05-50\*  
 #02-55 TO #05-55  
 #02-66 TO #05-66\*

\*MIRROR IMAGE



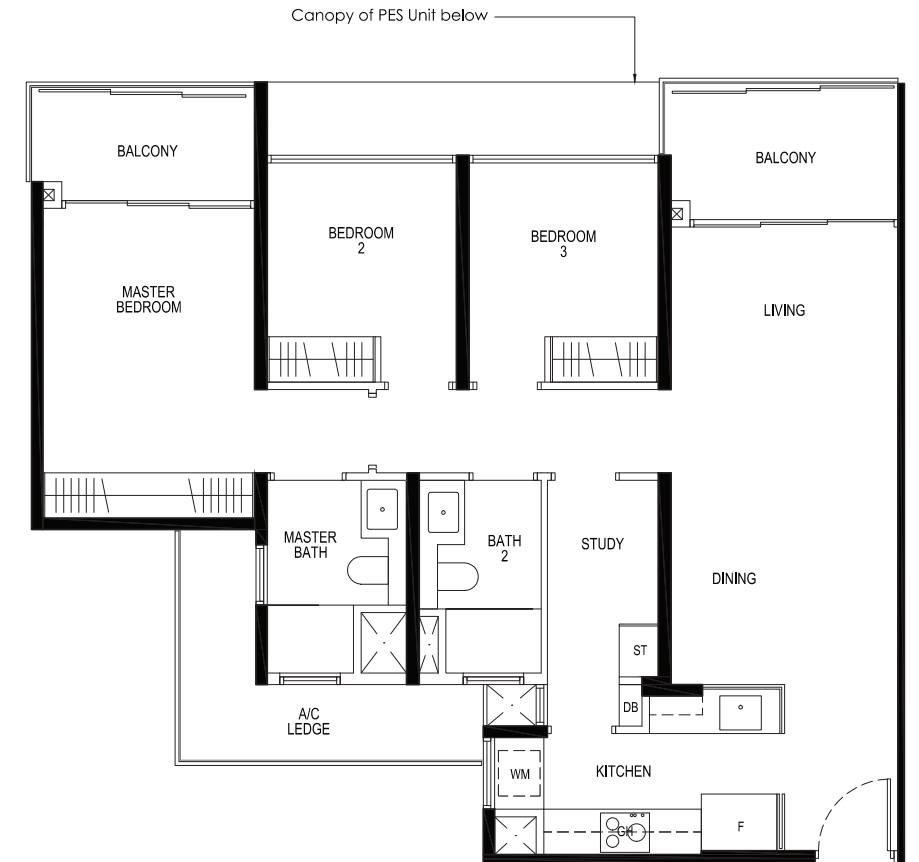
### 3 - BEDROOM TYPE C1d

98 sq m / 1055 sq ft  
 INCLUSIVE OF 11 SQ M BALCONY & 7 SQ M A/C LEDGE  
 5TH STOREY ONLY: CEILING HEIGHT AT LIVING / DINING,  
 BEDROOM AND STUDY IS APPROXIMATELY 4.3 M

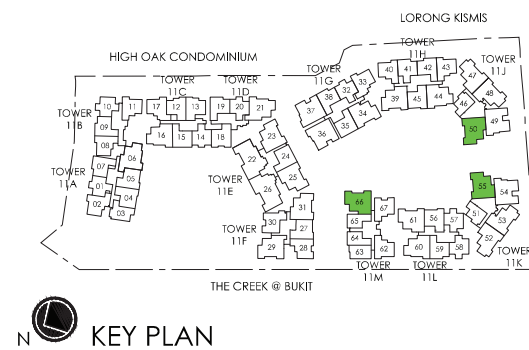
TOWER 11E, 11F, 11G, 11H & 11L

UNIT  
 #02-23 TO #05-23  
 #02-25 TO #05-25\*  
 #02-31 TO #05-31  
 #02-34 TO #05-34  
 #02-39 TO #05-39\*  
 #02-61 TO #05-61

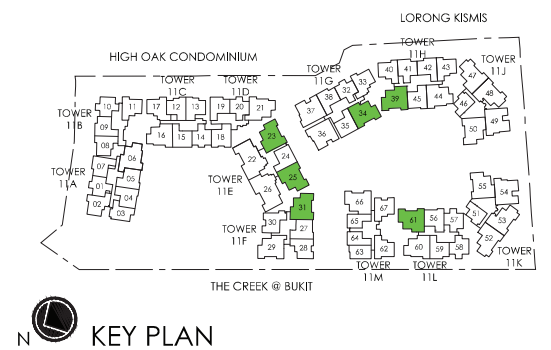
\*MIRROR IMAGE



- LEGEND:
- F - FRIDGE
  - WM - WASHER CUM DRYER
  - IH - INDUCTION HOB
  - GH - GAS HOB
  - ST - STORAGE
  - DB - DISTRIBUTION BOARD
  - WC - WATER CLOSET
  - A/C - AIR CONDITIONER
  - PES - PRIVATE ENCLOSED SPACE



- LEGEND:
- F - FRIDGE
  - WM - WASHER CUM DRYER
  - IH - INDUCTION HOB
  - GH - GAS HOB
  - ST - STORAGE
  - DB - DISTRIBUTION BOARD
  - WC - WATER CLOSET
  - A/C - AIR CONDITIONER
  - PES - PRIVATE ENCLOSED SPACE



AREA INCLUDES A/C LEDGE, BALCONY, PES AND VOID AREA WHERE APPLICABLE. SOME UNITS ARE MIRROR IMAGES OF THE APARTMENT PLANS SHOWN IN THE BROCHURE. PLEASE REFER TO KEY PLANS FOR ORIENTATION. ALL PLANS ARE SUBJECT TO CHANGE AS MAY BE APPROVED BY THE RELEVANT AUTHORITIES. ALL FLOOR AREAS ARE APPROXIMATE MEASUREMENTS ONLY AND ARE SUBJECT TO FINAL SURVEY. BP APPROVAL NO. A1839-00012-2017-BP01 DATED 14/06/2018

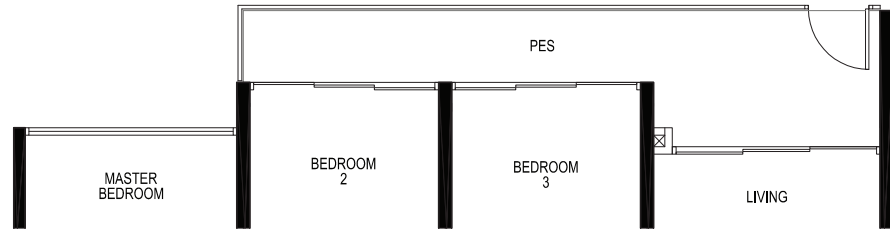
AREA INCLUDES A/C LEDGE, BALCONY, PES AND VOID AREA WHERE APPLICABLE. SOME UNITS ARE MIRROR IMAGES OF THE APARTMENT PLANS SHOWN IN THE BROCHURE. PLEASE REFER TO KEY PLANS FOR ORIENTATION. ALL PLANS ARE SUBJECT TO CHANGE AS MAY BE APPROVED BY THE RELEVANT AUTHORITIES. ALL FLOOR AREAS ARE APPROXIMATE MEASUREMENTS ONLY AND ARE SUBJECT TO FINAL SURVEY. BP APPROVAL NO. A1839-00012-2017-BP01 DATED 14/06/2018

### 3 - BEDROOM TYPE C2-P

98 sq m / 1055 sq ft  
 INCLUSIVE OF 11 SQ M PES & 7 SQ M A/C LEDGE  
 CEILING HEIGHT AT LIVING / DINING,  
 AND BEDROOM IS APPROXIMATELY 4.3 M

TOWER 11H

UNIT  
 #01-44



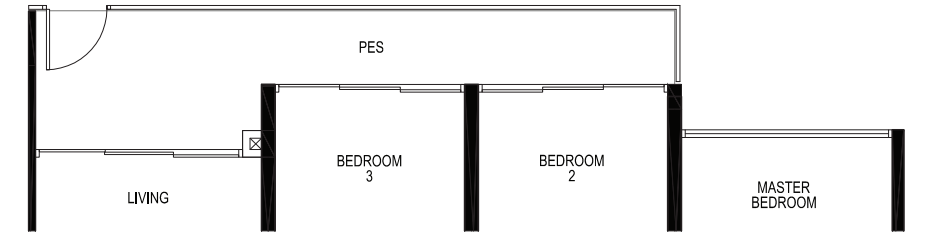
### 3 - BEDROOM TYPE C3a-P

103 sq m / 1109 sq ft  
 INCLUSIVE OF 11 SQ M PES & 7 SQ M A/C LEDGE  
 CEILING HEIGHT AT LIVING / DINING,  
 BEDROOM AND STUDY IS APPROXIMATELY 4.3 M

TOWER 11A & 11D

UNIT  
 #01-06\*  
 #01-21

\*MIRROR IMAGE

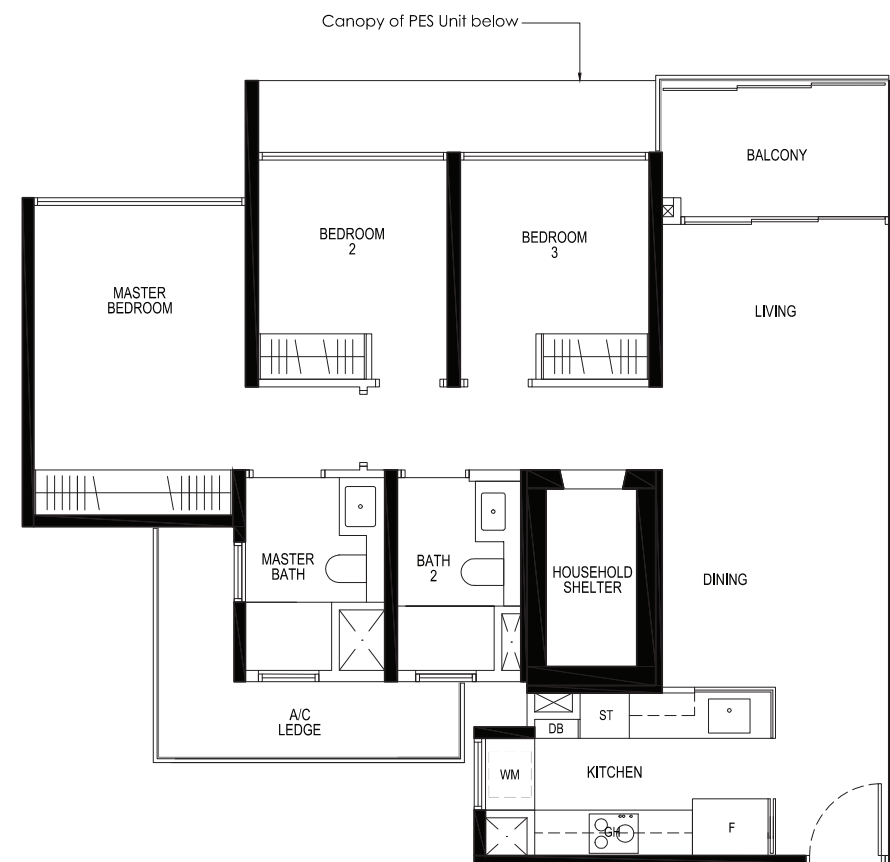


### 3 - BEDROOM TYPE C2

93 sq m / 1001 sq ft  
 INCLUSIVE OF 6 SQ M BALCONY & 7 SQ M A/C LEDGE  
 5TH STOREY ONLY: CEILING HEIGHT AT LIVING / DINING  
 AND BEDROOM IS APPROXIMATELY 4.3 M

TOWER 11H

UNIT  
 #02-44 TO #05-44



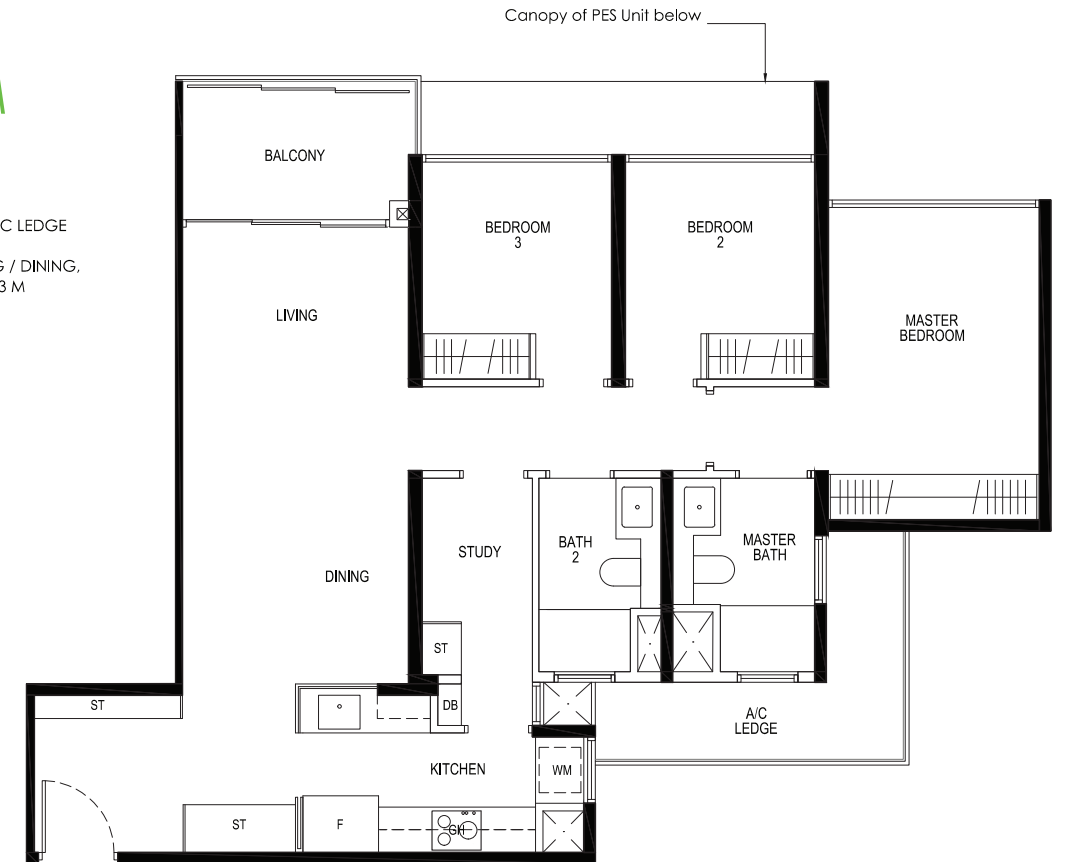
### 3 - BEDROOM TYPE C3a

97 sq m / 1044 sq ft  
 INCLUSIVE OF 6 SQ M BALCONY & 7 SQ M A/C LEDGE  
 5TH STOREY ONLY: CEILING HEIGHT AT LIVING / DINING,  
 BEDROOM AND STUDY IS APPROXIMATELY 4.3 M

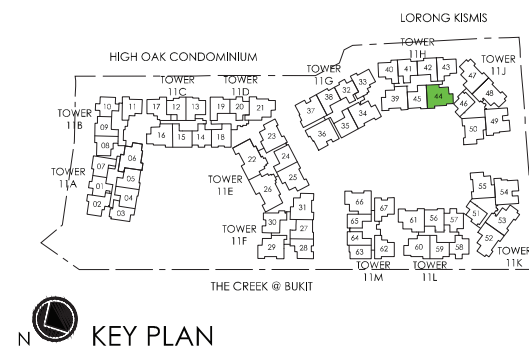
TOWER 11A & 11D

UNIT  
 #02-06 TO #05-06\*  
 #02-21 TO #05-21

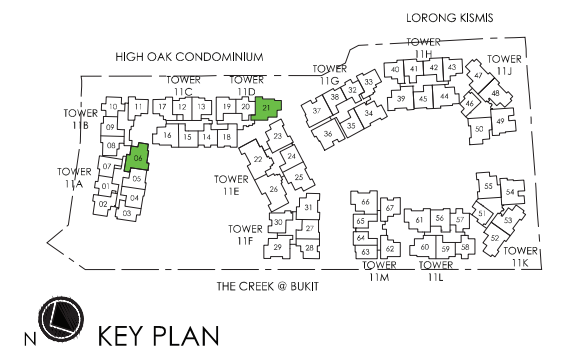
\*MIRROR IMAGE



- LEGEND:
- F - FRIDGE
  - WM - WASHER CUM DRYER
  - IH - INDUCTION HOB
  - GH - GAS HOB
  - ST - STORAGE
  - DB - DISTRIBUTION BOARD
  - WC - WATER CLOSET
  - A/C - AIR CONDITIONER
  - PES - PRIVATE ENCLOSED SPACE



- LEGEND:
- F - FRIDGE
  - WM - WASHER CUM DRYER
  - IH - INDUCTION HOB
  - GH - GAS HOB
  - ST - STORAGE
  - DB - DISTRIBUTION BOARD
  - WC - WATER CLOSET
  - A/C - AIR CONDITIONER
  - PES - PRIVATE ENCLOSED SPACE



AREA INCLUDES A/C LEDGE, BALCONY, PES AND VOID AREA WHERE APPLICABLE. SOME UNITS ARE MIRROR IMAGES OF THE APARTMENT PLANS SHOWN IN THE BROCHURE. PLEASE REFER TO KEY PLANS FOR ORIENTATION. ALL PLANS ARE SUBJECT TO CHANGE AS MAY BE APPROVED BY THE RELEVANT AUTHORITIES. ALL FLOOR AREAS ARE APPROXIMATE MEASUREMENTS ONLY AND ARE SUBJECT TO FINAL SURVEY. BP APPROVAL NO. A1839-00012-2017-BP01 DATED 14/06/2018

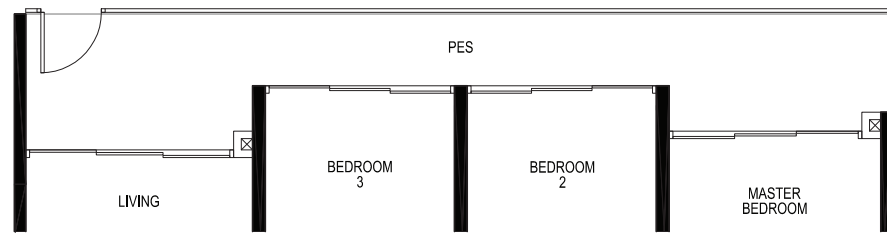
AREA INCLUDES A/C LEDGE, BALCONY, PES AND VOID AREA WHERE APPLICABLE. SOME UNITS ARE MIRROR IMAGES OF THE APARTMENT PLANS SHOWN IN THE BROCHURE. PLEASE REFER TO KEY PLANS FOR ORIENTATION. ALL PLANS ARE SUBJECT TO CHANGE AS MAY BE APPROVED BY THE RELEVANT AUTHORITIES. ALL FLOOR AREAS ARE APPROXIMATE MEASUREMENTS ONLY AND ARE SUBJECT TO FINAL SURVEY. BP APPROVAL NO. A1839-00012-2017-BP01 DATED 14/06/2018

### 3 - BEDROOM TYPE C3b-P

106 sq m / 1141 sq ft  
INCLUSIVE OF 16 SQ M PES & 7 SQ M A/C LEDGE  
CEILING HEIGHT AT LIVING / DINING,  
BEDROOM AND STUDY IS APPROXIMATELY 4.3 M

TOWER 11F

UNIT  
#01-29



### 3 - BEDROOM TYPE C4-P

107 sq m / 1152 sq ft  
INCLUSIVE OF 15 SQ M PES & 6 SQ M A/C LEDGE  
CEILING HEIGHT AT LIVING / DINING,  
BEDROOM AND STUDY IS APPROXIMATELY 4.3 M

TOWER 11J & 11K

UNIT  
#01-49\*  
#01-54

\*MIRROR IMAGE

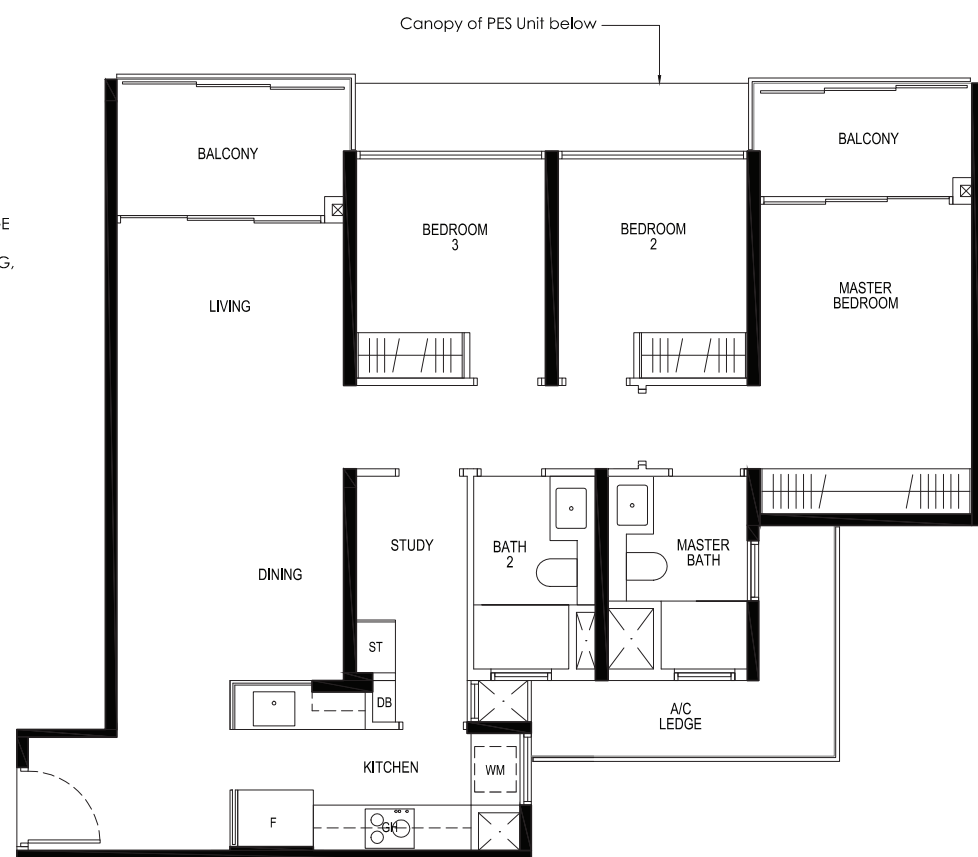


### 3 - BEDROOM TYPE C3b

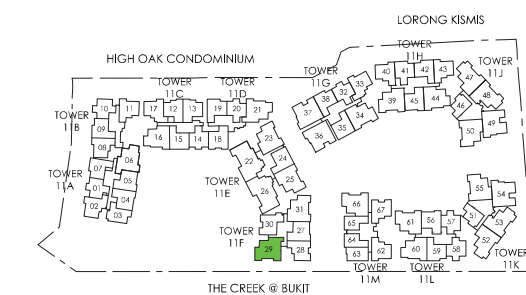
100 sq m / 1076 sq ft  
INCLUSIVE OF 11 SQ M BALCONY & 7 SQ M A/C LEDGE  
5TH STOREY ONLY: CEILING HEIGHT AT LIVING / DINING,  
BEDROOM AND STUDY IS APPROXIMATELY 4.3 M

TOWER 11F

UNIT  
#02-29 TO #05-29



LEGEND:  
F - FRIDGE GH - GAS HOB WC - WATER CLOSET  
WM - WASHER CUM DRYER ST - STORAGE A/C - AIR CONDITIONER  
IH - INDUCTION HOB DB - DISTRIBUTION BOARD PES - PRIVATE ENCLOSED SPACE

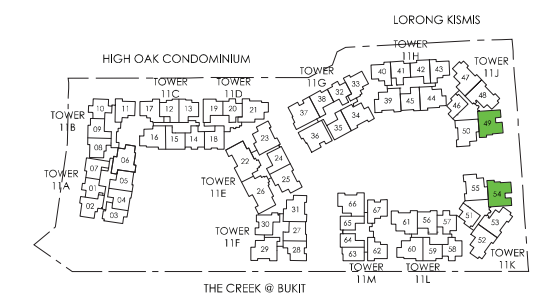


KEY PLAN

AREA INCLUDES A/C LEDGE, BALCONY, PES AND VOID AREA WHERE APPLICABLE. SOME UNITS ARE MIRROR IMAGES OF THE APARTMENT PLANS SHOWN IN THE BROCHURE. PLEASE REFER TO KEY PLANS FOR ORIENTATION. ALL PLANS ARE SUBJECT TO CHANGE AS MAY BE APPROVED BY THE RELEVANT AUTHORITIES. ALL FLOOR AREAS ARE APPROXIMATE MEASUREMENTS ONLY AND ARE SUBJECT TO FINAL SURVEY. BP APPROVAL NO. A1839-00012-2017-BP01 DATED 14/06/2018



LEGEND:  
F - FRIDGE GH - GAS HOB WC - WATER CLOSET  
WM - WASHER CUM DRYER ST - STORAGE A/C - AIR CONDITIONER  
IH - INDUCTION HOB DB - DISTRIBUTION BOARD PES - PRIVATE ENCLOSED SPACE



KEY PLAN

AREA INCLUDES A/C LEDGE, BALCONY, PES AND VOID AREA WHERE APPLICABLE. SOME UNITS ARE MIRROR IMAGES OF THE APARTMENT PLANS SHOWN IN THE BROCHURE. PLEASE REFER TO KEY PLANS FOR ORIENTATION. ALL PLANS ARE SUBJECT TO CHANGE AS MAY BE APPROVED BY THE RELEVANT AUTHORITIES. ALL FLOOR AREAS ARE APPROXIMATE MEASUREMENTS ONLY AND ARE SUBJECT TO FINAL SURVEY. BP APPROVAL NO. A1839-00012-2017-BP01 DATED 14/06/2018

# 3 - BEDROOM TYPE C4

104 sq m / 1119 sq ft  
INCLUSIVE OF 12 SQ M BALCONY & 6 SQ M A/C LEDGE

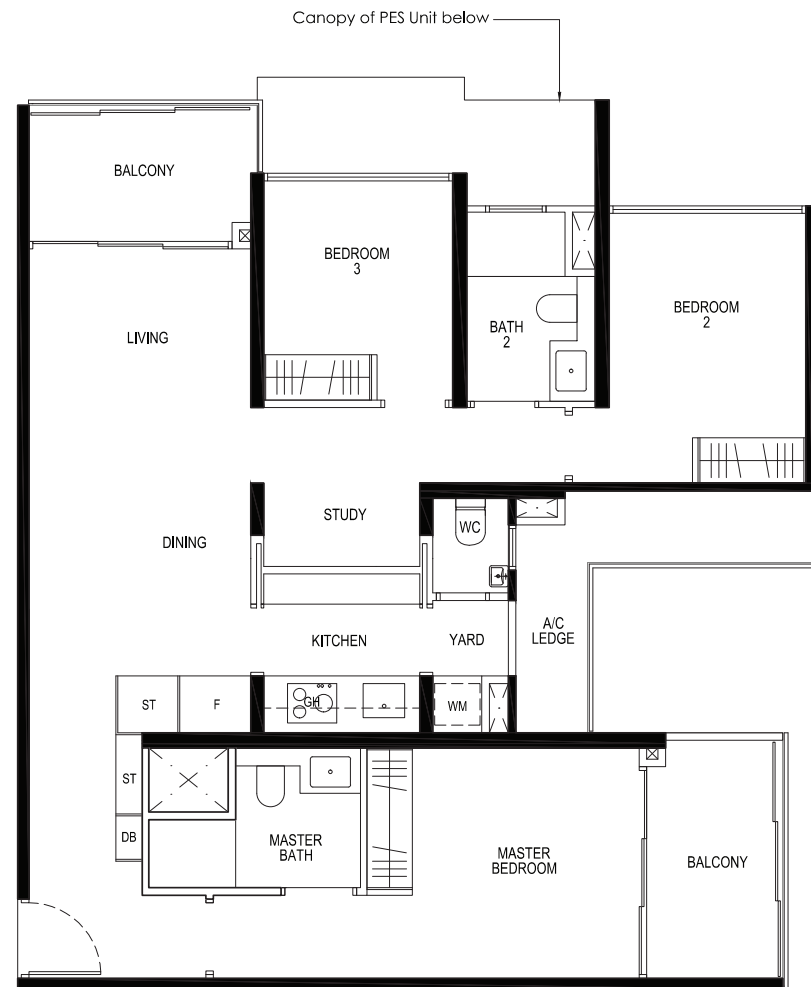
5TH STOREY ONLY: CEILING HEIGHT AT LIVING / DINING, BEDROOM AND STUDY IS APPROXIMATELY 4.3 M

TOWER 11J & 11K

UNIT

#02-49 TO #05-49\*  
#02-54 TO #05-54

\*MIRROR IMAGE



# 3 - BEDROOM TYPE C5-P

116 sq m / 1249 sq ft  
INCLUSIVE OF 20 SQ M PES & 6 SQ M A/C LEDGE

CEILING HEIGHT AT LIVING / DINING, AND BEDROOM IS APPROXIMATELY 4.3 M

TOWER 11G

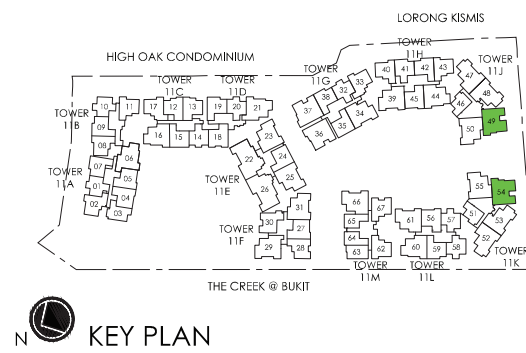
UNIT

#01-36\*  
#01-37

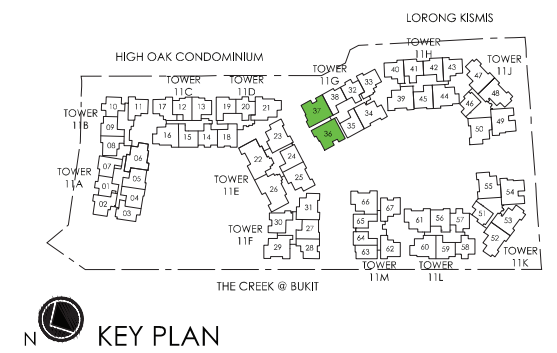
\*MIRROR IMAGE



LEGEND:  
F - FRIDGE GH - GAS HOB WC - WATER CLOSET  
WM - WASHER CUM DRYER ST - STORAGE A/C - AIR CONDITIONER  
IH - INDUCTION HOB DB - DISTRIBUTION BOARD PES - PRIVATE ENCLOSED SPACE



LEGEND:  
F - FRIDGE GH - GAS HOB WC - WATER CLOSET  
WM - WASHER CUM DRYER ST - STORAGE A/C - AIR CONDITIONER  
IH - INDUCTION HOB DB - DISTRIBUTION BOARD PES - PRIVATE ENCLOSED SPACE



# 3 - BEDROOM TYPE C5

112 sq m / 1206 sq ft  
INCLUSIVE OF 15 SQ M BALCONY & 6 SQ M A/C LEDGE

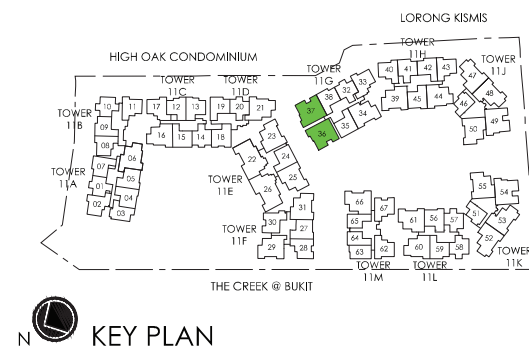
5TH STOREY ONLY: CEILING HEIGHT AT LIVING / DINING,  
AND BEDROOM IS APPROXIMATELY 4.3 M

TOWER 11G

UNIT

#02-36 TO #05-36\*  
#02-37 TO #05-37

\*MIRROR IMAGE



- LEGEND:
- F - FRIDGE
  - WM - WASHER CUM DRYER
  - IH - INDUCTION HOB
  - GH - GAS HOB
  - ST - STORAGE
  - DB - DISTRIBUTION BOARD
  - WC - WATER CLOSET
  - A/C - AIR CONDITIONER
  - PES - PRIVATE ENCLOSED SPACE

AREA INCLUDES A/C LEDGE, BALCONY, PES AND VOID AREA WHERE APPLICABLE. SOME UNITS ARE MIRROR IMAGES OF THE APARTMENT PLANS SHOWN IN THE BROCHURE. PLEASE REFER TO KEY PLANS FOR ORIENTATION. ALL PLANS ARE SUBJECT TO CHANGE AS MAY BE APPROVED BY THE RELEVANT AUTHORITIES. ALL FLOOR AREAS ARE APPROXIMATE MEASUREMENTS ONLY AND ARE SUBJECT TO FINAL SURVEY.  
BP APPROVAL NO. A1839-00012-2017-BP01 DATED 14/06/2018

# 4 - BEDROOM TYPE D1-P

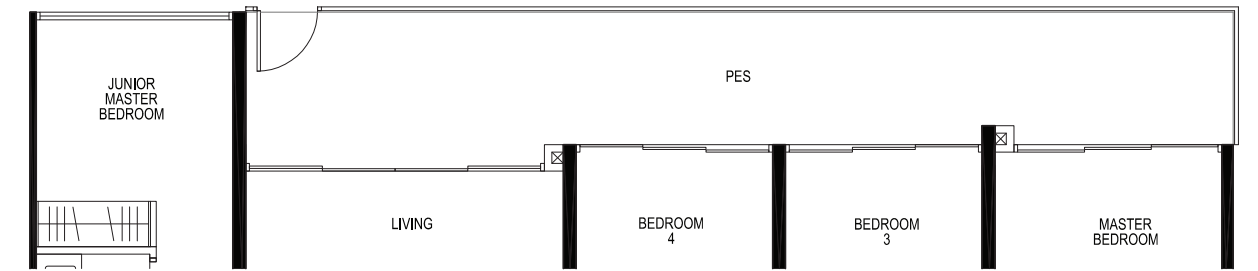
148 sq m / 1593 sq ft  
INCLUSIVE OF 25 SQ M PES & 6 SQ M A/C LEDGE

CEILING HEIGHT AT LIVING / DINING,  
AND BEDROOM IS APPROXIMATELY 4.3 M

TOWER 11E

UNIT

#01-22



# 4 - BEDROOM TYPE D1

138 sq m / 1485 sq ft  
INCLUSIVE OF 14 SQ M BALCONY & 6 SQ M A/C LEDGE

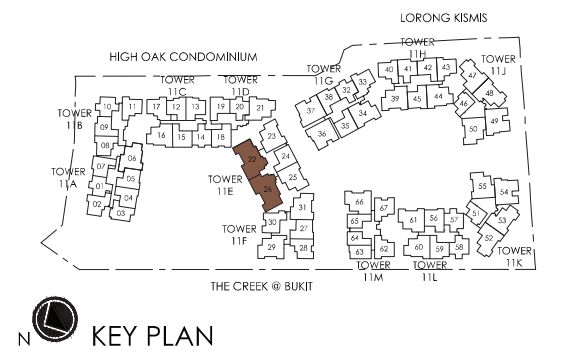
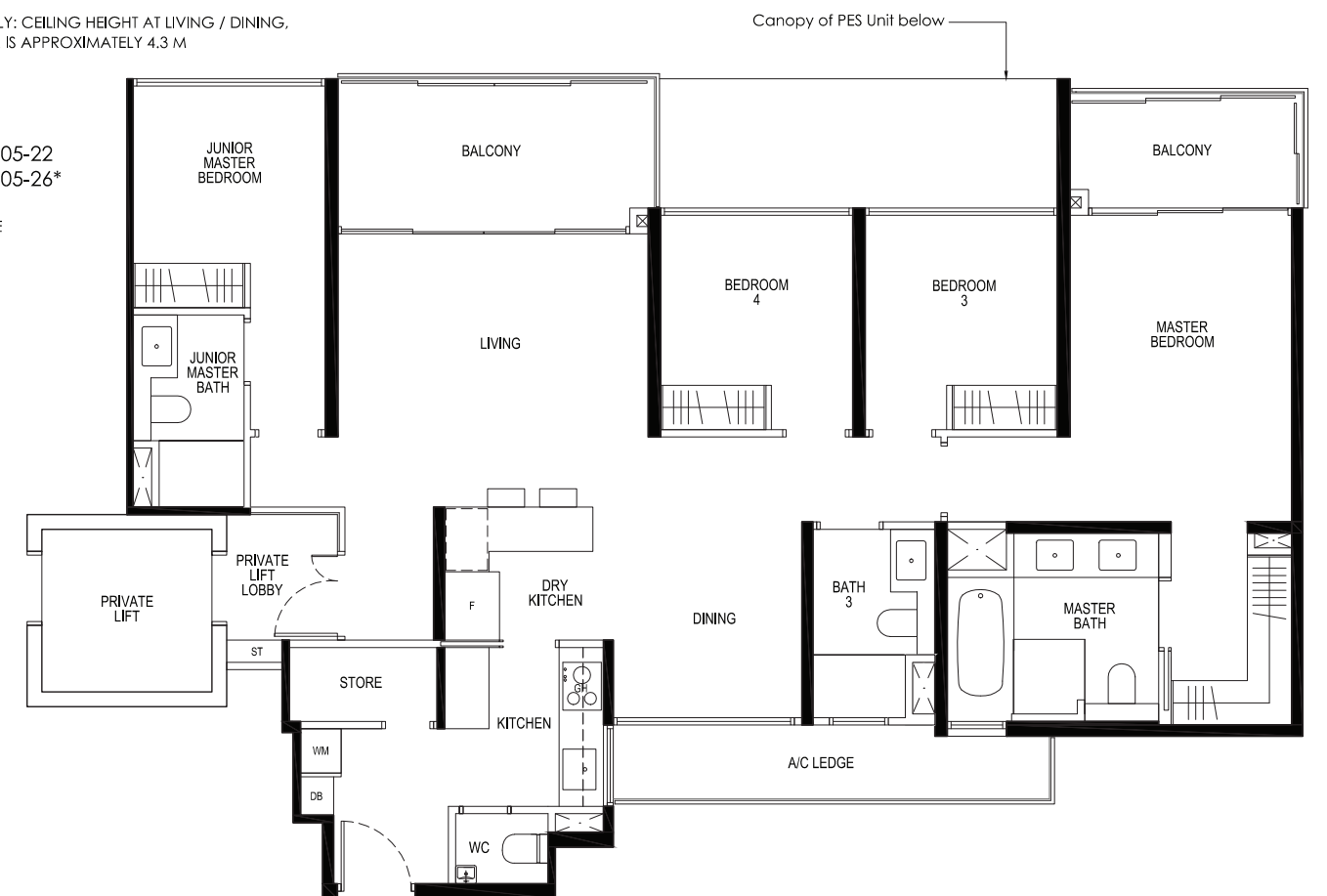
5TH STOREY ONLY: CEILING HEIGHT AT LIVING / DINING,  
AND BEDROOM IS APPROXIMATELY 4.3 M

TOWER 11E

UNIT

#02-22 TO #05-22  
#02-26 TO #05-26\*

\*MIRROR IMAGE



- LEGEND:
- F - FRIDGE
  - WM - WASHER CUM DRYER
  - IH - INDUCTION HOB
  - GH - GAS HOB
  - ST - STORAGE
  - DB - DISTRIBUTION BOARD
  - WC - WATER CLOSET
  - A/C - AIR CONDITIONER
  - PES - PRIVATE ENCLOSED SPACE

AREA INCLUDES A/C LEDGE, BALCONY, PES AND VOID AREA WHERE APPLICABLE. SOME UNITS ARE MIRROR IMAGES OF THE APARTMENT PLANS SHOWN IN THE BROCHURE. PLEASE REFER TO KEY PLANS FOR ORIENTATION. ALL PLANS ARE SUBJECT TO CHANGE AS MAY BE APPROVED BY THE RELEVANT AUTHORITIES. ALL FLOOR AREAS ARE APPROXIMATE MEASUREMENTS ONLY AND ARE SUBJECT TO FINAL SURVEY.  
BP APPROVAL NO. A1839-00012-2017-BP01 DATED 14/06/2018